

Datasheet for ABIN632295 **anti-CRYM antibody (N-Term)**



[Go to Product page](#)

1 Image

Overview

Quantity:	100 µL
Target:	CRYM
Binding Specificity:	N-Term
Reactivity:	Human
Host:	Rabbit
Clonality:	Polyclonal
Conjugate:	This CRYM antibody is un-conjugated
Application:	Western Blotting (WB)

Product Details

Immunogen:	Crystallin Mu antibody was raised using the N terminal of CRYM corresponding to a region with amino acids ALTTKLVTFYEDRGITSVVP SHQATVLLFEP SNGTLLAVMDGNVITAKRT
Specificity:	Crystallin Mu antibody was raised against the N terminal of CRYM
Purification:	Affinity purified

Target Details

Target:	CRYM
Alternative Name:	Crystallin mu (CRYM Products)
Background:	Crystallins are separated into two classes: taxon-specific and ubiquitous. The former class is also called phylogenetically-restricted crystallins. The latter class constitutes the major proteins of vertebrate eye lens and maintains the transparency and refractive index of the lens.

Target Details

Molecular Weight:	34 kDa (MW of target protein)
Pathways:	Hormone Transport, Sensory Perception of Sound

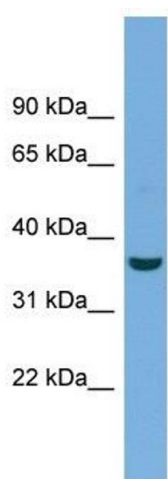
Application Details

Application Notes:	WB: 1 µg/mL Optimal conditions should be determined by the investigator.
Comment:	Crystallin Mu Blocking Peptide, catalog no. 33R-1375, is also available for use as a blocking control in assays to test for specificity of this Crystallin Mu antibody
Restrictions:	For Research Use only

Handling

Format:	Lyophilized
Reconstitution:	Lyophilized powder. Add distilled water for a 1 mg/mL concentration of CRYM antibody in PBS
Concentration:	Lot specific
Buffer:	PBS
Handling Advice:	Avoid repeated freeze/thaw cycles. Dilute only prior to immediate use.
Storage:	4 °C/-20 °C
Storage Comment:	Store at 2-8 °C for short periods. For longer periods of storage, store at -20 °C.

Images



Western Blotting

Image 1. Crystallin Mu antibody used at 1 µg/ml to detect target protein.