

Datasheet for ABIN632306

anti-Syntrophin gamma 1 antibody (Middle Region)[Go to Product page](#)**1** Image

Overview

Quantity:	100 µL
Target:	Syntrophin gamma 1 (SNTG1)
Binding Specificity:	Middle Region
Reactivity:	Human
Host:	Rabbit
Clonality:	Polyclonal
Conjugate:	This Syntrophin gamma 1 antibody is un-conjugated
Application:	Western Blotting (WB)

Product Details

Immunogen:	Syntrophin Gamma 1 antibody was raised using the middle region of SNTG1 corresponding to a region with amino acids RFSQYVPGTDLRQNAFQVIADVGVCTGIIQCLSAEDCVDWLQAIATNIS
Specificity:	Syntrophin Gamma 1 antibody was raised against the middle region of SNTG1
Purification:	Affinity purified

Target Details

Target:	Syntrophin gamma 1 (SNTG1)
Alternative Name:	Syntrophin gamma 1 (SNTG1 Products)
Background:	The protein encoded by this gene is a member of the syntrophin family. Syntrophins are cytoplasmic peripheral membrane proteins.

Target Details

Molecular Weight: 58 kDa (MW of target protein)

Application Details

Application Notes: WB: 1 µg/mL
Optimal conditions should be determined by the investigator.

Comment: Syntrophin Gamma 1 Blocking Peptide, catalog no. 33R-7908, is also available for use as a blocking control in assays to test for specificity of this Syntrophin Gamma 1 antibody

Restrictions: For Research Use only

Handling

Format: Lyophilized

Reconstitution: Lyophilized powder. Add distilled water for a 1 mg/mL concentration of SNTG1 antibody in PBS

Concentration: Lot specific

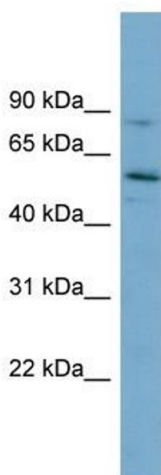
Buffer: PBS

Handling Advice: Avoid repeated freeze/thaw cycles.
Dilute only prior to immediate use.

Storage: 4 °C/-20 °C

Storage Comment: Store at 2-8 °C for short periods. For longer periods of storage, store at -20 °C.

Images



Western Blotting

Image 1. Syntrophin Gamma 1 antibody used at 1 µg/ml to detect target protein.