

Datasheet for ABIN632307  
**anti-LDHB antibody (C-Term)**



[Go to Product page](#)

2 Images

## Overview

Quantity:	100 µL
Target:	LDHB
Binding Specificity:	C-Term
Reactivity:	Human
Host:	Rabbit
Clonality:	Polyclonal
Conjugate:	This LDHB antibody is un-conjugated
Application:	Western Blotting (WB)

## Product Details

Immunogen:	LDHB antibody was raised using the C terminal of LDHB corresponding to a region with amino acids MYGIENEVFLSLPCILNARGLTSVINQKCLKDDEVAQLKKSADTLWDIQKD
Specificity:	LDHB antibody was raised against the C terminal of LDHB
Purification:	Affinity purified

## Target Details

Target:	LDHB
Alternative Name:	LDHB ( <a href="#">LDHB Products</a> )
Background:	LDHB belongs to the LDH/MDH superfamily, LDH family. Defects in LDHB are a cause of hereditary LDHB deficiency. LDHB may also have roles in progression of medulloblastoma.

## Target Details

Molecular Weight: 37 kDa (MW of target protein)

Pathways: [Warburg Effect](#)

## Application Details

Application Notes: WB: 1 µg/mL

Optimal conditions should be determined by the investigator.

Comment: LDHB Blocking Peptide, catalog no. 33R-6625, is also available for use as a blocking control in assays to test for specificity of this LDHB antibody

Restrictions: For Research Use only

## Handling

Format: Lyophilized

Reconstitution: Lyophilized powder. Add distilled water for a 1 mg/mL concentration of LDHB antibody in PBS

Concentration: Lot specific

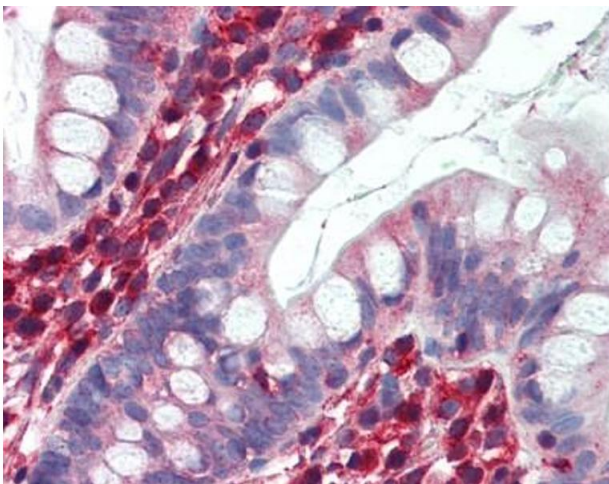
Buffer: PBS

Handling Advice: Avoid repeated freeze/thaw cycles.  
Dilute only prior to immediate use.

Storage: 4 °C/-20 °C

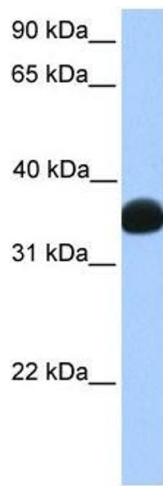
Storage Comment: Store at 2-8 °C for short periods. For longer periods of storage, store at -20 °C.

## Images



### Immunohistochemistry

**Image 1.** LDHB antibody was used for immunohistochemistry at a concentration of 4-8 µg/ml. Magnification is at 400X



### Western Blotting

**Image 2.** LDHB antibody used at 1 ug/ml to detect target protein.