

Datasheet for ABIN632308 **anti-LCA5 antibody (N-Term)**



[Go to Product page](#)

1 Image

Overview

Quantity:	100 µL
Target:	LCA5
Binding Specificity:	N-Term
Reactivity:	Human
Host:	Rabbit
Clonality:	Polyclonal
Conjugate:	This LCA5 antibody is un-conjugated
Application:	Western Blotting (WB)

Product Details

Immunogen:	LCA5 antibody was raised using the N terminal of LCA5 corresponding to a region with amino acids FSLQKLKEISEARHLPERDDLAKKLVSAELKLDDETERRIKELSKNLELST
Specificity:	LCA5 antibody was raised against the N terminal of LCA5
Purification:	Affinity purified

Target Details

Target:	LCA5
Alternative Name:	LCA5 (LCA5 Products)
Background:	LCA5 is a protein that is thought to be involved in centrosomal or ciliary functions. Mutations in this gene cause Leber congenital amaurosis type V. Mutations in this gene cause Leber congenital amaurosis type V. Alternative splicing results in two transcript variants.

Target Details

Molecular Weight: 80 kDa (MW of target protein)

Application Details

Application Notes: WB: 1 µg/mL
Optimal conditions should be determined by the investigator.

Comment: LCA5 Blocking Peptide, catalog no. 33R-3071, is also available for use as a blocking control in assays to test for specificity of this LCA5 antibody

Restrictions: For Research Use only

Handling

Format: Lyophilized

Reconstitution: Lyophilized powder. Add distilled water for a 1 mg/mL concentration of LCA5 antibody in PBS

Concentration: Lot specific

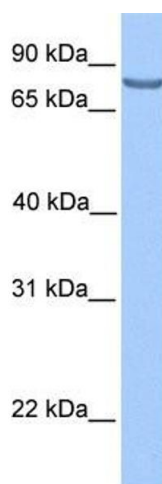
Buffer: PBS

Handling Advice: Avoid repeated freeze/thaw cycles.
Dilute only prior to immediate use.

Storage: 4 °C/-20 °C

Storage Comment: Store at 2-8 °C for short periods. For longer periods of storage, store at -20 °C.

Images



Western Blotting

Image 1. LCA5 antibody used at 1 ug/ml to detect target protein.