

Datasheet for ABIN632318 **anti-PPP1R11 antibody**



[Go to Product page](#)

1 Image

Overview

Quantity:	100 µL
Target:	PPP1R11
Reactivity:	Human, Rat
Host:	Rabbit
Clonality:	Polyclonal
Conjugate:	This PPP1R11 antibody is un-conjugated
Application:	Western Blotting (WB)

Product Details

Immunogen:	PPP1 R11 antibody was raised using a synthetic peptide corresponding to a region with amino acids MAEAGAGLSETVTETTVTVTTEPENRSLTIKLRKRKPEKKVEWTS DTVDN
Purification:	Affinity purified

Target Details

Target:	PPP1R11
Alternative Name:	PPP1R11 (PPP1R11 Products)
Background:	This gene encodes a specific inhibitor of protein phosphatase-1 (PP1) with a differential sensitivity toward the metal-independent and metal-dependent forms of PP1.
Molecular Weight:	14 kDa (MW of target protein)

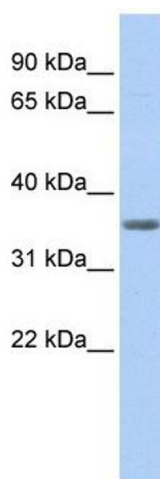
Application Details

Application Notes:	WB: 1 µg/mL Optimal conditions should be determined by the investigator.
Comment:	PPP1R11 Blocking Peptide, catalog no. 33R-5629, is also available for use as a blocking control in assays to test for specificity of this PPP1R11 antibody
Restrictions:	For Research Use only

Handling

Format:	Lyophilized
Reconstitution:	Lyophilized powder. Add distilled water for a 1 mg/mL concentration of PPP0 11 antibody in PBS
Concentration:	Lot specific
Buffer:	PBS
Handling Advice:	Avoid repeated freeze/thaw cycles.
Storage:	4 °C/-20 °C
Storage Comment:	Store at 2-8 °C for short periods. For longer periods of storage, store at -20 °C.

Images



Western Blotting

Image 1. PPP1R11 antibody used at 1 µg/ml to detect target protein.