

Datasheet for ABIN632324
anti-CCDC78 antibody (Middle Region)



[Go to Product page](#)

1 Image

Overview

Quantity:	100 µL
Target:	CCDC78
Binding Specificity:	Middle Region
Reactivity:	Human
Host:	Rabbit
Clonality:	Polyclonal
Conjugate:	This CCDC78 antibody is un-conjugated
Application:	Western Blotting (WB)

Product Details

Immunogen:	CCDC78 antibody was raised using the middle region of CCDC78 corresponding to a region with amino acids QELRHKAQVPGHSDDHRFQVQPKNTMDPENEQHRLGSGVSVQPPSSGERA
Specificity:	CCDC78 antibody was raised against the middle region of CCDC78
Purification:	Affinity purified

Target Details

Target:	CCDC78
Alternative Name:	CCDC78 (CCDC78 Products)
Background:	The function of CCDC78 protein has not been widely studied, and is yet to be fully elucidated.
Molecular Weight:	37 kDa (MW of target protein)

Target Details

Pathways: [Skeletal Muscle Fiber Development](#)

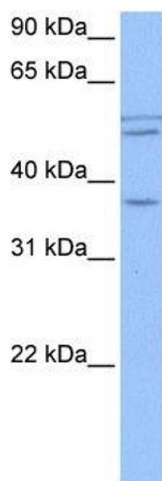
Application Details

Application Notes:	WB: 1 µg/mL Optimal conditions should be determined by the investigator.
Comment:	CCDC78 Blocking Peptide, catalog no. 33R-7533, is also available for use as a blocking control in assays to test for specificity of this CCDC78 antibody
Restrictions:	For Research Use only

Handling

Format:	Lyophilized
Reconstitution:	Lyophilized powder. Add distilled water for a 1 mg/mL concentration of CCDC78 antibody in PBS
Concentration:	Lot specific
Buffer:	PBS
Handling Advice:	Avoid repeated freeze/thaw cycles. Dilute only prior to immediate use.
Storage:	4 °C/-20 °C
Storage Comment:	Store at 2-8 °C for short periods. For longer periods of storage, store at -20 °C.

Images



Western Blotting

Image 1. CCDC78 antibody used at 1 ug/ml to detect target protein.