

Datasheet for ABIN632342
anti-EXOC6 antibody (N-Term)



[Go to Product page](#)

1 Image

Overview

Quantity:	100 µL
Target:	EXOC6
Binding Specificity:	N-Term
Reactivity:	Human
Host:	Rabbit
Clonality:	Polyclonal
Conjugate:	This EXOC6 antibody is un-conjugated
Application:	Western Blotting (WB)

Product Details

Immunogen:	EXOC6 antibody was raised using the N terminal of EXOC6 corresponding to a region with amino acids MLEEETDQTYENVLAEIQSFELPVEATLRVYDDQPNAHKKFMEKLDACI
Specificity:	EXOC6 antibody was raised against the N terminal of EXOC6
Purification:	Affinity purified

Target Details

Target:	EXOC6
Alternative Name:	EXOC6 (EXOC6 Products)
Background:	The product of this gene belongs to the SEC15 family. It is highly similar to the protein encoded by <i>Saccharomyces cerevisiae</i> SEC15 gene. This protein is essential for vesicular traffic from the Golgi apparatus to the cell surface in yeast. It is one of the components of a multiprotein

Target Details

complex required for exocytosis. Alternatively spliced transcript variants encoding different isoforms have been identified.

Molecular Weight: 88 kDa (MW of target protein)

Pathways: [Peptide Hormone Metabolism](#), [Synaptic Vesicle Exocytosis](#)

Application Details

Application Notes: WB: 1 µg/mL
Optimal conditions should be determined by the investigator.

Comment: EXOC6 Blocking Peptide, catalog no. 33R-6184, is also available for use as a blocking control in assays to test for specificity of this EXOC6 antibody

Restrictions: For Research Use only

Handling

Format: Lyophilized

Reconstitution: Lyophilized powder. Add distilled water for a 1 mg/mL concentration of EXOC6 antibody in PBS

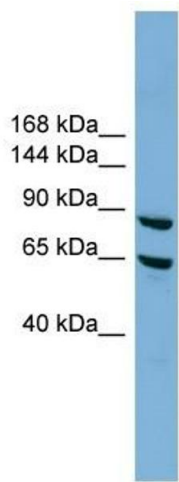
Concentration: Lot specific

Buffer: PBS

Handling Advice: Avoid repeated freeze/thaw cycles.
Dilute only prior to immediate use.

Storage: 4 °C/-20 °C

Storage Comment: Store at 2-8 °C for short periods. For longer periods of storage, store at -20 °C.



Western Blotting

Image 1. EXOC6 antibody used at 1 ug/ml to detect target protein.