

## Datasheet for ABIN632351 **anti-MED8 antibody (N-Term)**



[Go to Product page](#)

### 1 Image

#### Overview

Quantity:	100 µL
Target:	MED8
Binding Specificity:	N-Term
Reactivity:	Human, Mouse
Host:	Rabbit
Clonality:	Polyclonal
Conjugate:	This MED8 antibody is un-conjugated
Application:	Western Blotting (WB)

#### Product Details

Immunogen:	MED8 antibody was raised using the N terminal of MED8 corresponding to a region with amino acids MQREEKQLEASLDALLSQVADLKNSLGSFICKLENEYGRLTWPSVLDSFA
Specificity:	MED8 antibody was raised against the N terminal of MED8
Purification:	Affinity purified

#### Target Details

Target:	MED8
Alternative Name:	MED8 ( <a href="#">MED8 Products</a> )
Background:	MED8 is a protein that is one of more than 20 subunits of the mediator complex, first identified in <i>S. cerevisiae</i> , that is required for activation of transcription. MED8 also interacts with elongins B and C, and CUL2 and RBX1, to reconstitute a ubiquitin ligase.

## Target Details

Molecular Weight:	33 kDa (MW of target protein)
Pathways:	<a href="#">Regulation of Lipid Metabolism by PPARalpha</a>

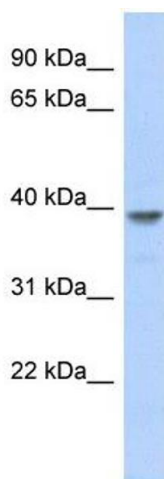
## Application Details

Application Notes:	WB: 1 µg/mL Optimal conditions should be determined by the investigator.
Comment:	MED8 Blocking Peptide, catalog no. 33R-6339, is also available for use as a blocking control in assays to test for specificity of this MED8 antibody
Restrictions:	For Research Use only

## Handling

Format:	Lyophilized
Reconstitution:	Lyophilized powder. Add distilled water for a 1 mg/mL concentration of MED8 antibody in PBS
Concentration:	Lot specific
Buffer:	PBS
Handling Advice:	Avoid repeated freeze/thaw cycles. Dilute only prior to immediate use.
Storage:	4 °C/-20 °C
Storage Comment:	Store at 2-8 °C for short periods. For longer periods of storage, store at -20 °C.

## Images



### Western Blotting

**Image 1.** MED8 antibody used at 1 µg/ml to detect target protein.