

## Datasheet for ABIN632352 **anti-FBXL14 antibody (N-Term)**



[Go to Product page](#)

### 1 Image

#### Overview

Quantity:	100 µL
Target:	FBXL14
Binding Specificity:	N-Term
Reactivity:	Human, Mouse, Rat
Host:	Rabbit
Clonality:	Polyclonal
Conjugate:	This FBXL14 antibody is un-conjugated
Application:	Western Blotting (WB)

#### Product Details

Immunogen:	FBXL14 antibody was raised using the N terminal of FBXL14 corresponding to a region with amino acids WRDAA <sup>Y</sup> HKS <sup>V</sup> WRG <sup>V</sup> EAKLH <sup>L</sup> RRAN <sup>P</sup> SLF <sup>P</sup> SLQ <sup>A</sup> RG <sup>I</sup> RR <sup>V</sup> QIL <sup>S</sup> LR <sup>R</sup> SL <sup>S</sup> Y
Specificity:	FBXL14 antibody was raised against the N terminal of FBXL14
Purification:	Affinity purified

#### Target Details

Target:	FBXL14
Alternative Name:	FBXL14 ( <a href="#">FBXL14 Products</a> )
Background:	FBXL14 is a substrate-recognition component of the SCF (SKP1-CUL1-F-box protein)-type E3 ubiquitin ligase complex. Members of the F-box protein family, such as FBXL14, are characterized by an approximately 40-amino acid F-box motif. SCF complexes, formed by

## Target Details

---

SKP1, cullin, and F-box proteins, act as protein-ubiquitin ligases.

Molecular Weight: 46 kDa (MW of target protein)

## Application Details

---

Application Notes: WB: 1 µg/mL  
Optimal conditions should be determined by the investigator.

Comment: FBXL14 Blocking Peptide, catalog no. 33R-9997, is also available for use as a blocking control in assays to test for specificity of this FBXL14 antibody

Restrictions: For Research Use only

## Handling

---

Format: Lyophilized

Reconstitution: Lyophilized powder. Add distilled water for a 1 mg/mL concentration of FBXL14 antibody in PBS

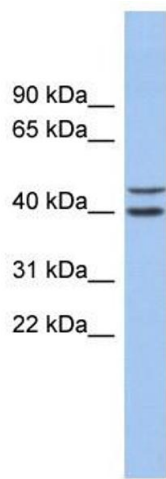
Concentration: Lot specific

Buffer: PBS

Handling Advice: Avoid repeated freeze/thaw cycles.  
Dilute only prior to immediate use.

Storage: 4 °C/-20 °C

Storage Comment: Store at 2-8 °C for short periods. For longer periods of storage, store at -20 °C.



### Western Blotting

**Image 1.** FBXL14 antibody used at 1 ug/ml to detect target protein.