

Datasheet for ABIN632355
anti-FBXO16 antibody (N-Term)



[Go to Product page](#)

1 Image

Overview

Quantity:	100 µL
Target:	FBXO16
Binding Specificity:	N-Term
Reactivity:	Human, Mouse, Rat
Host:	Rabbit
Clonality:	Polyclonal
Conjugate:	This FBXO16 antibody is un-conjugated
Application:	Western Blotting (WB)

Product Details

Immunogen:	FBXO16 antibody was raised using the N terminal of FBXO16 corresponding to a region with amino acids CRKLQEKIPAEALDFTTKLPRVLSLYIFSFLDPRSLCRCAQVCWHWKNLA
Specificity:	FBXO16 antibody was raised against the N terminal of FBXO16
Purification:	Affinity purified

Target Details

Target:	FBXO16
Alternative Name:	FBXO16 (FBXO16 Products)
Background:	FBXO16 is a member of the F-box protein family, members of which are characterized by an approximately 40 amino acid motif, the F-box. The F-box proteins constitute one of the four subunits of ubiquitin protein ligase complex called SCFs (SKP1-cullin-F-box), which function in

Target Details

phosphorylation-dependent ubiquitination. The F-box proteins are divided into three classes: Fbws containing WD-40 domains, Fbls containing leucine-rich repeats, and Fbxs containing either different protein-protein interaction modules or no recognizable motifs. FBXO16 belongs to the Fbx class.

Molecular Weight: 34 kDa (MW of target protein)

Application Details

Application Notes: WB: 1 µg/mL
Optimal conditions should be determined by the investigator.

Comment: FBXO16 Blocking Peptide, catalog no. 33R-1795, is also available for use as a blocking control in assays to test for specificity of this FBXO16 antibody

Restrictions: For Research Use only

Handling

Format: Lyophilized

Reconstitution: Lyophilized powder. Add distilled water for a 1 mg/mL concentration of FBXO16 antibody in PBS

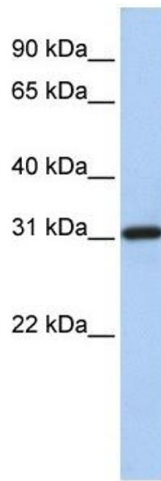
Concentration: Lot specific

Buffer: PBS

Handling Advice: Avoid repeated freeze/thaw cycles.
Dilute only prior to immediate use.

Storage: 4 °C/-20 °C

Storage Comment: Store at 2-8 °C for short periods. For longer periods of storage, store at -20 °C.



Western Blotting

Image 1. FBXO16 antibody used at 1 ug/ml to detect target protein.