

Datasheet for ABIN632356 **anti-FBX016 antibody (C-Term)**



[Go to Product page](#)

1 Image

Overview

| | |
|----------------------|---------------------------------------|
| Quantity: | 100 µL |
| Target: | FBX016 |
| Binding Specificity: | C-Term |
| Reactivity: | Human, Mouse, Rat |
| Host: | Rabbit |
| Clonality: | Polyclonal |
| Conjugate: | This FBX016 antibody is un-conjugated |
| Application: | Western Blotting (WB) |

Product Details

| | |
|---------------|---|
| Immunogen: | FBX016 antibody was raised using the C terminal of FBX016 corresponding to a region with amino acids SPLSAFRSSSSLRKKNNSGEKALPPWRSSDKHPTDIIRFNYLDNRDPMET |
| Specificity: | FBX016 antibody was raised against the C terminal of FBX016 |
| Purification: | Affinity purified |

Target Details

| | |
|-------------------|--|
| Target: | FBX016 |
| Alternative Name: | FBX016 (FBX016 Products) |
| Background: | FBX016 is a member of the F-box protein family, members of which are characterized by an approximately 40 amino acid motif, the F-box. The F-box proteins constitute one of the four subunits of ubiquitin protein ligase complex called SCFs (SKP1-cullin-F-box), which function in |

Target Details

phosphorylation-dependent ubiquitination. The F-box proteins are divided into three classes: Fbws containing WD-40 domains, Fbls containing leucine-rich repeats, and Fbxs containing either different protein-protein interaction modules or no recognizable motifs. FBXO16 belongs to the Fbx class.

Molecular Weight: 34 kDa (MW of target protein)

Application Details

Application Notes: WB: 1 µg/mL
Optimal conditions should be determined by the investigator.

Comment: FBXO16 Blocking Peptide, catalog no. 33R-8681, is also available for use as a blocking control in assays to test for specificity of this FBXO16 antibody

Restrictions: For Research Use only

Handling

Format: Lyophilized

Reconstitution: Lyophilized powder. Add distilled water for a 1 mg/mL concentration of FBXO16 antibody in PBS

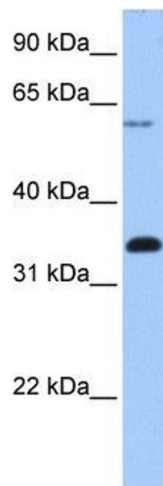
Concentration: Lot specific

Buffer: PBS

Handling Advice: Avoid repeated freeze/thaw cycles.
Dilute only prior to immediate use.

Storage: 4 °C/-20 °C

Storage Comment: Store at 2-8 °C for short periods. For longer periods of storage, store at -20 °C.



Western Blotting

Image 1. FBXO16 antibody used at 1 ug/ml to detect target protein.