

Datasheet for ABIN632368  
**anti-SENP5 antibody (Middle Region)**



[Go to Product page](#)

1 Image

## Overview

Quantity:	100 µL
Target:	SENP5
Binding Specificity:	Middle Region
Reactivity:	Human, Mouse, Rat
Host:	Rabbit
Clonality:	Polyclonal
Conjugate:	This SENP5 antibody is un-conjugated
Application:	Western Blotting (WB)

## Product Details

Immunogen:	SENP5 antibody was raised using the middle region of SENP5 corresponding to a region with amino acids LSGFLDEVMKKYGSLVPLSEKEVLGRLKDVFNEDFSNRKPFINREITNYR
Specificity:	SENP5 antibody was raised against the middle region of SENP5
Purification:	Affinity purified

## Target Details

Target:	SENP5
Alternative Name:	SENP5 ( <a href="#">SENP5 Products</a> )
Background:	The reversible posttranslational modification of proteins by the addition of small ubiquitin-like SUMO proteins is required for numerous biologic processes. SUMO-specific proteases, such as SENP5, are responsible for the initial processing of SUMO precursors to generate a C-terminal

## Target Details

---

diglycine motif required for the conjugation reaction. They also have isopeptidase activity for the removal of SUMO from high molecular mass SUMO conjugates.

Molecular Weight: 87 kDa (MW of target protein)

## Application Details

---

Application Notes: WB: 1 µg/mL  
Optimal conditions should be determined by the investigator.

Comment: SENP5 Blocking Peptide, catalog no. 33R-5426, is also available for use as a blocking control in assays to test for specificity of this SENP5 antibody

Restrictions: For Research Use only

## Handling

---

Format: Lyophilized

Reconstitution: Lyophilized powder. Add distilled water for a 1 mg/mL concentration of SENP5 antibody in PBS

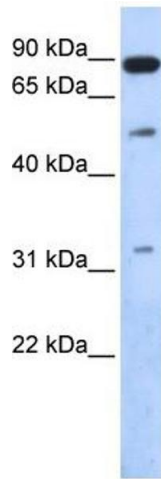
Concentration: Lot specific

Buffer: PBS

Handling Advice: Avoid repeated freeze/thaw cycles.  
Dilute only prior to immediate use.

Storage: 4 °C/-20 °C

Storage Comment: Store at 2-8 °C for short periods. For longer periods of storage, store at -20 °C.



### Western Blotting

**Image 1.** SENP5 antibody used at 1 ug/ml to detect target protein.