

Datasheet for ABIN632375

anti-OTUB1 antibody (N-Term)[Go to Product page](#)**1** Image

Overview

Quantity:	100 µL
Target:	OTUB1
Binding Specificity:	N-Term
Reactivity:	Human
Host:	Rabbit
Clonality:	Polyclonal
Conjugate:	This OTUB1 antibody is un-conjugated
Application:	Western Blotting (WB)

Product Details

Immunogen:	OTUB1 antibody was raised using the N terminal of OTUB1 corresponding to a region with amino acids DRIQQEIAVQNPLVSRLELSVLYKEYAEDDNIYQQKIKDLHKKYSYIRK
Specificity:	OTUB1 antibody was raised against the N terminal of OTUB1
Purification:	Affinity purified

Target Details

Target:	OTUB1
Alternative Name:	OTUB1 (OTUB1 Products)
Background:	The product of this gene is a member of the OTU (ovarian tumor) superfamily of predicted cysteine proteases. The encoded protein is a highly specific ubiquitin iso-peptidase, and cleaves ubiquitin from branched poly-ubiquitin chains but not from ubiquitin.

Target Details

Molecular Weight: 31 kDa (MW of target protein)

Application Details

Application Notes: WB: 1 µg/mL
Optimal conditions should be determined by the investigator.

Comment: OTUB1 Blocking Peptide, catalog no. 33R-2145, is also available for use as a blocking control in assays to test for specificity of this OTUB1 antibody

Restrictions: For Research Use only

Handling

Format: Lyophilized

Reconstitution: Lyophilized powder. Add distilled water for a 1 mg/mL concentration of OTUB1 antibody in PBS

Concentration: Lot specific

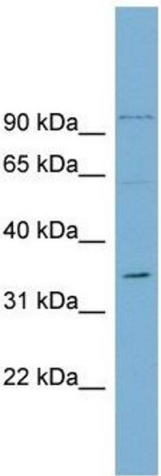
Buffer: PBS

Handling Advice: Avoid repeated freeze/thaw cycles.
Dilute only prior to immediate use.

Storage: 4 °C/-20 °C

Storage Comment: Store at 2-8 °C for short periods. For longer periods of storage, store at -20 °C.

Images



Western Blotting

Image 1. OTUB1 antibody used at 1 ug/ml to detect target protein.