

Datasheet for ABIN632377  
**anti-GFOD1 antibody (Middle Region)**



[Go to Product page](#)

1 Image

## Overview

Quantity:	100 µL
Target:	GFOD1
Binding Specificity:	Middle Region
Reactivity:	Human
Host:	Rabbit
Clonality:	Polyclonal
Conjugate:	This GFOD1 antibody is un-conjugated
Application:	Western Blotting (WB)

## Product Details

Immunogen:	GFOD1 antibody was raised using the middle region of GFOD1 corresponding to a region with amino acids NSLLPEKAFSDIPSPYLRGTIKMMQAVRQAFQDQDDRRPWDGRPLTMAAT
Specificity:	GFOD1 antibody was raised against the middle region of GFOD1
Purification:	Affinity purified

## Target Details

Target:	GFOD1
Alternative Name:	GFOD1 ( <a href="#">GFOD1 Products</a> )
Background:	The function of GFOD1 protein is not widely studied, and is yet to be elucidated fully.
Molecular Weight:	43 kDa (MW of target protein)

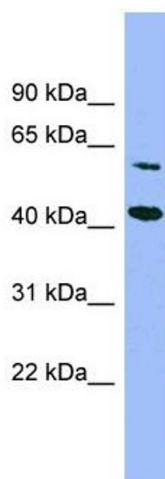
## Application Details

Application Notes:	WB: 1 µg/mL Optimal conditions should be determined by the investigator.
Comment:	GFOD1 Blocking Peptide, catalog no. 33R-6883, is also available for use as a blocking control in assays to test for specificity of this GFOD1 antibody
Restrictions:	For Research Use only

## Handling

Format:	Lyophilized
Reconstitution:	Lyophilized powder. Add distilled water for a 1 mg/mL concentration of GFOD1 antibody in PBS
Concentration:	Lot specific
Buffer:	PBS
Handling Advice:	Avoid repeated freeze/thaw cycles. Dilute only prior to immediate use.
Storage:	4 °C/-20 °C
Storage Comment:	Store at 2-8 °C for short periods. For longer periods of storage, store at -20 °C.

## Images



### Western Blotting

**Image 1.** GFOD1 antibody used at 1 ug/ml to detect target protein.