

Datasheet for ABIN632380  
**anti-Desmin antibody (Middle Region)**



[Go to Product page](#)

1 Image

## Overview

Quantity:	100 µL
Target:	Desmin (DES)
Binding Specificity:	Middle Region
Reactivity:	Human, Rat, Mouse, Dog
Host:	Rabbit
Clonality:	Polyclonal
Conjugate:	This Desmin antibody is un-conjugated
Application:	Western Blotting (WB)

## Product Details

Immunogen:	Desmin antibody was raised using the middle region of DES corresponding to a region with amino acids MALDVEIATYRKLLLEGESRINLPIQTYSALNFRETSPEQRGSEVHTKKT
Specificity:	Desmin antibody was raised against the middle region of DES
Purification:	Affinity purified

## Target Details

Target:	Desmin (DES)
Alternative Name:	Desmin
Background:	DES is a muscle-specific class III intermediate filament. Homopolymers of this protein form a stable intracytoplasmic filamentous network connecting myofibrils to each other and to the plasma membrane. Mutations in its gene are associated with desmin-related myopathy, a

## Target Details

familial cardiac and skeletal myopathy (CSM), and with distal myopathies.

Molecular Weight: 53 kDa (MW of target protein)

## Application Details

Application Notes: WB: 1 µg/mL

Optimal conditions should be determined by the investigator.

Comment: Desmin Blocking Peptide, (ABIN5613180), is also available for use as a blocking control in assays to test for specificity of this Desmin antibody

Restrictions: For Research Use only

## Handling

Format: Lyophilized

Reconstitution: Lyophilized powder. Add distilled water for a 1 mg/mL concentration of DES antibody in PBS

Concentration: Lot specific

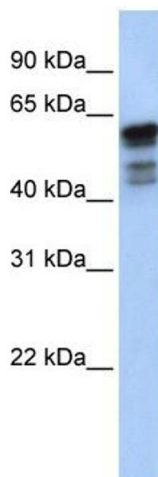
Buffer: PBS

Handling Advice: Avoid repeated freeze/thaw cycles.  
Dilute only prior to immediate use.

Storage: 4 °C/-20 °C

Storage Comment: Store at 2-8 °C for short periods. For longer periods of storage, store at -20 °C.

## Images



### Western Blotting

**Image 1.** Desmin antibody used at 1 ug/ml to detect target protein.