

Datasheet for ABIN632381  
**anti-Leiomodin 1 antibody**



[Go to Product page](#)

1 Image

## Overview

Quantity:	100 µL
Target:	Leiomodin 1 (LMOD1)
Reactivity:	Human, Mouse, Rat
Host:	Rabbit
Clonality:	Polyclonal
Conjugate:	This Leiomodin 1 antibody is un-conjugated
Application:	Western Blotting (WB)

## Product Details

Immunogen:	Leiomodin 1 antibody was raised using a synthetic peptide corresponding to a region with amino acids SRVAKYRRQVSEDPDIDSLLETLSPEEMEELEKELDVVDPDGSVPVGLRQ
Purification:	Affinity purified

## Target Details

Target:	Leiomodin 1 (LMOD1)
Alternative Name:	Leiomodin 1 ( <a href="#">LMOD1 Products</a> )
Background:	The leiomodin 1 protein (LMOD1) has a putative membrane-spanning region and 2 types of tandemly repeated blocks. The transcript is expressed in all tissues tested, with the highest levels in thyroid, eye muscle, skeletal muscle, and ovary. Increased expression of leiomodin 1 may be linked to Graves' disease and thyroid-associated ophthalmopathy.
Molecular Weight:	67 kDa (MW of target protein)

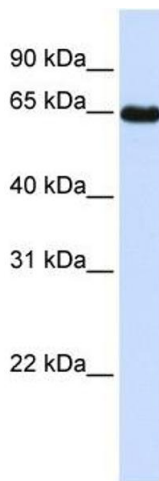
## Application Details

Application Notes:	WB: 1 µg/mL Optimal conditions should be determined by the investigator.
Comment:	Leiomodin 1 Blocking Peptide, catalog no. 33R-8783, is also available for use as a blocking control in assays to test for specificity of this Leiomodin 1 antibody
Restrictions:	For Research Use only

## Handling

Format:	Lyophilized
Reconstitution:	Lyophilized powder. Add distilled water for a 1 mg/mL concentration of LMOD1 antibody in PBS
Concentration:	Lot specific
Buffer:	PBS
Handling Advice:	Avoid repeated freeze/thaw cycles.
Storage:	4 °C/-20 °C
Storage Comment:	Store at 2-8 °C for short periods. For longer periods of storage, store at -20 °C.

## Images



### Western Blotting

**Image 1.** Leiomodin 1 antibody used at 1 µg/ml to detect target protein.