

Datasheet for ABIN632383 **anti-COPG antibody (N-Term)**



[Go to Product page](#)

1 Image

Overview

Quantity:	100 µL
Target:	COPG
Binding Specificity:	N-Term
Reactivity:	Human
Host:	Rabbit
Clonality:	Polyclonal
Conjugate:	This COPG antibody is un-conjugated
Application:	Western Blotting (WB)

Product Details

Immunogen:	COPG antibody was raised using the N terminal of COPG corresponding to a region with amino acids MLKKFDKKDEESGGSNPFQHLEKSAVLQEARVFNETPINPRKCAHILTK
Specificity:	COPG antibody was raised against the N terminal of COPG
Purification:	Affinity purified

Target Details

Target:	COPG
Alternative Name:	COPG (COPG Products)
Background:	The coatomer is a cytosolic protein complex that binds to dilysine motifs and reversibly associates with Golgi non-clathrin-coated vesicles, which further mediate biosynthetic protein transport from the ER, via the Golgi up to the trans Golgi network.

Target Details

Molecular Weight: 98 kDa (MW of target protein)

Application Details

Application Notes: WB: 1 µg/mL
Optimal conditions should be determined by the investigator.

Comment: COPG Blocking Peptide, catalog no. 33R-6190, is also available for use as a blocking control in assays to test for specificity of this COPG antibody

Restrictions: For Research Use only

Handling

Format: Lyophilized

Reconstitution: Lyophilized powder. Add distilled water for a 1 mg/mL concentration of COPG antibody in PBS

Concentration: Lot specific

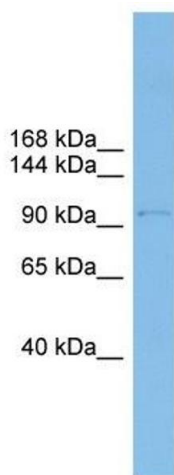
Buffer: PBS

Handling Advice: Avoid repeated freeze/thaw cycles.
Dilute only prior to immediate use.

Storage: 4 °C/-20 °C

Storage Comment: Store at 2-8 °C for short periods. For longer periods of storage, store at -20 °C.

Images



Western Blotting

Image 1. COPG antibody used at 1 ug/ml to detect target protein.