

Datasheet for ABIN632389 **anti-AP2B1 antibody (C-Term)**



[Go to Product page](#)

1 Image

Overview

Quantity:	100 µL
Target:	AP2B1
Binding Specificity:	C-Term
Reactivity:	Human, Mouse, Rat
Host:	Rabbit
Clonality:	Polyclonal
Conjugate:	This AP2B1 antibody is un-conjugated
Application:	Western Blotting (WB)

Product Details

Immunogen:	AP2 B1 antibody was raised using the C terminal of AP2 1 corresponding to a region with amino acids GAVDLLGGGLDSSLGSDLGGGIGGSPAVGQSFIPSSVPATFAPSPTPAVV
Specificity:	AP2 B1 antibody was raised against the C terminal of AP2 1
Purification:	Affinity purified

Target Details

Target:	AP2B1
Alternative Name:	AP2B1 (AP2B1 Products)
Background:	AP2B1 is one of two large chain components of the assembly protein complex 2, which serves to link clathrin to receptors in coated vesicles. AP2B1 is found on the cytoplasmic face of coated vesicles in the plasma membrane.

Target Details

Molecular Weight:	105 kDa (MW of target protein)
Pathways:	EGFR Signaling Pathway , Neurotrophin Signaling Pathway , EGFR Downregulation

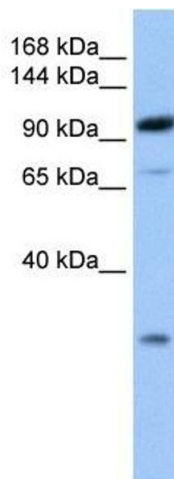
Application Details

Application Notes:	WB: 1 µg/mL Optimal conditions should be determined by the investigator.
Comment:	AP2B1 Blocking Peptide, catalog no. 33R-3178, is also available for use as a blocking control in assays to test for specificity of this AP2B1 antibody
Restrictions:	For Research Use only

Handling

Format:	Lyophilized
Reconstitution:	Lyophilized powder. Add distilled water for a 1 mg/mL concentration of AP0 1 antibody in PBS
Concentration:	Lot specific
Buffer:	PBS
Handling Advice:	Avoid repeated freeze/thaw cycles. Dilute only prior to immediate use.
Storage:	4 °C/-20 °C
Storage Comment:	Store at 2-8 °C for short periods. For longer periods of storage, store at -20 °C.

Images



Western Blotting

Image 1. AP2B1 antibody used at 1 µg/ml to detect target protein.