

Datasheet for ABIN632399

anti-AP3S1 antibody (N-Term)[Go to Product page](#)**1** Image

Overview

Quantity:	100 µL
Target:	AP3S1
Binding Specificity:	N-Term
Reactivity:	Human, Mouse, Rat
Host:	Rabbit
Clonality:	Polyclonal
Conjugate:	This AP3S1 antibody is un-conjugated
Application:	Western Blotting (WB)

Product Details

Immunogen:	AP3 S1 antibody was raised using the N terminal of AP3 1 corresponding to a region with amino acids IKAILIFNNHGKPRLSKFYQPYSEDTQQIIRETFHLVSKRDENVCFLE
Specificity:	AP3 S1 antibody was raised against the N terminal of AP3 1
Purification:	Affinity purified

Target Details

Target:	AP3S1
Alternative Name:	AP3S1 (AP3S1 Products)
Background:	AP3S1 is part of the AP-3 complex, an adapter-related complex which is not clathrin-associated. The complex is associated with the Golgi region as well as more peripheral structures. It facilitates the budding of vesicles from the Golgi membrane and may be directly

Target Details

involved in trafficking to lysosomes.

Molecular Weight: 22 kDa (MW of target protein)

Application Details

Application Notes: WB: 1 µg/mL

Optimal conditions should be determined by the investigator.

Comment: AP3S1 Blocking Peptide, catalog no. 33R-4012, is also available for use as a blocking control in assays to test for specificity of this AP3S1 antibody

Restrictions: For Research Use only

Handling

Format: Lyophilized

Reconstitution: Lyophilized powder. Add distilled water for a 1 mg/mL concentration of AP0 1 antibody in PBS

Concentration: Lot specific

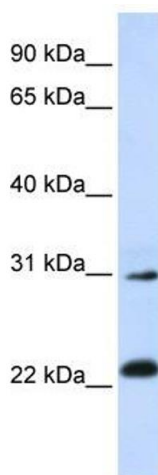
Buffer: PBS

Handling Advice: Avoid repeated freeze/thaw cycles.
Dilute only prior to immediate use.

Storage: 4 °C/-20 °C

Storage Comment: Store at 2-8 °C for short periods. For longer periods of storage, store at -20 °C.

Images



Western Blotting

Image 1. AP3S1 antibody used at 1 µg/ml to detect target protein.