

Datasheet for ABIN632403 **anti-ICA1 antibody (C-Term)**



[Go to Product page](#)

1 Image

Overview

Quantity:	100 µL
Target:	ICA1
Binding Specificity:	C-Term
Reactivity:	Human, Mouse
Host:	Rabbit
Clonality:	Polyclonal
Conjugate:	This ICA1 antibody is un-conjugated
Application:	Western Blotting (WB)

Product Details

Immunogen:	ICA1 antibody was raised using the C terminal of ICA1 corresponding to a region with amino acids NMKDLQASLQEPKAASDLTAWFSLFADLDPLSNPDAVGKTDKEHELLNA
Specificity:	ICA1 antibody was raised against the C terminal of ICA1
Purification:	Affinity purified

Target Details

Target:	ICA1
Alternative Name:	ICA1 (ICA1 Products)
Background:	ICA1 is a protein with an arfaptin homology domain that is found both in the cytosol and as membrane-bound form on the Golgi complex and immature secretory granules. This protein is believed to be an autoantigen in insulin-dependent diabetes mellitus and primary Sjogren's

Target Details

syndrome.

Molecular Weight: 53 kDa (MW of target protein)

Application Details

Application Notes: WB: 1 µg/mL

Optimal conditions should be determined by the investigator.

Comment: ICA1 Blocking Peptide, catalog no. 33R-6795, is also available for use as a blocking control in assays to test for specificity of this ICA1 antibody

Restrictions: For Research Use only

Handling

Format: Lyophilized

Reconstitution: Lyophilized powder. Add distilled water for a 1 mg/mL concentration of ICA1 antibody in PBS

Concentration: Lot specific

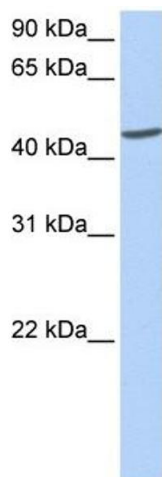
Buffer: PBS

Handling Advice: Avoid repeated freeze/thaw cycles.
Dilute only prior to immediate use.

Storage: 4 °C/-20 °C

Storage Comment: Store at 2-8 °C for short periods. For longer periods of storage, store at -20 °C.

Images



Western Blotting

Image 1. ICA1 antibody used at 1 µg/ml to detect target protein.