

Datasheet for ABIN632404 **anti-COPG2 antibody (N-Term)**



[Go to Product page](#)

1 Image

Overview

Quantity:	100 µL
Target:	COPG2
Binding Specificity:	N-Term
Reactivity:	Human, Mouse, Rat
Host:	Rabbit
Clonality:	Polyclonal
Conjugate:	This COPG2 antibody is un-conjugated
Application:	Western Blotting (WB)

Product Details

Immunogen:	COPG2 antibody was raised using the N terminal of COPG2 corresponding to a region with amino acids MIKKFDKKDEESGSGSNPFQHLEKSAVLQEARIFNETPINPRRCLHILTK
Specificity:	COPG2 antibody was raised against the N terminal of COPG2
Purification:	Affinity purified

Target Details

Target:	COPG2
Alternative Name:	COPG2 (COPG2 Products)
Background:	The coatomer is a cytosolic protein complex that binds to dilysine motifs and reversibly associates with Golgi non-clathrin-coated vesicles, which further mediate biosynthetic protein transport from the ER, via the Golgi up to the trans Golgi network.

Target Details

Molecular Weight: 97 kDa (MW of target protein)

Application Details

Application Notes: WB: 1 µg/mL
Optimal conditions should be determined by the investigator.

Comment: COPG2 Blocking Peptide, catalog no. 33R-6111, is also available for use as a blocking control in assays to test for specificity of this COPG2 antibody

Restrictions: For Research Use only

Handling

Format: Lyophilized

Reconstitution: Lyophilized powder. Add distilled water for a 1 mg/mL concentration of COPG2 antibody in PBS

Concentration: Lot specific

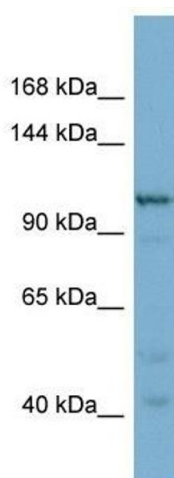
Buffer: PBS

Handling Advice: Avoid repeated freeze/thaw cycles.
Dilute only prior to immediate use.

Storage: 4 °C/-20 °C

Storage Comment: Store at 2-8 °C for short periods. For longer periods of storage, store at -20 °C.

Images



Western Blotting

Image 1. COPG2 antibody used at 1 ug/ml to detect target protein.