

Datasheet for ABIN632406
anti-SCFD1 antibody (N-Term)



[Go to Product page](#)

1 Image

Overview

Quantity:	100 µL
Target:	SCFD1
Binding Specificity:	N-Term
Reactivity:	Human, Mouse, Rat
Host:	Rabbit
Clonality:	Polyclonal
Conjugate:	This SCFD1 antibody is un-conjugated
Application:	Western Blotting (WB)

Product Details

Immunogen:	SCFD1 antibody was raised using the N terminal of SCFD1 corresponding to a region with amino acids SAVTQVAKVFDQYLNFFITLEDMMFVLCNQNKELVSYRAINRPDITDTEME
Specificity:	SCFD1 antibody was raised against the N terminal of SCFD1
Purification:	Affinity purified

Target Details

Target:	SCFD1
Alternative Name:	SCFD1 (SCFD1 Products)
Background:	The function of SCFD1 protein is not widely studied, and is yet to be elucidated fully.
Molecular Weight:	65 kDa (MW of target protein)

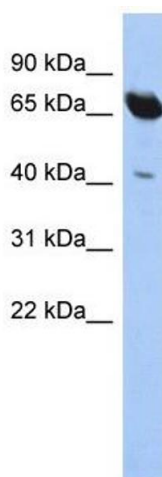
Application Details

Application Notes:	WB: 1 µg/mL Optimal conditions should be determined by the investigator.
Comment:	SCFD1 Blocking Peptide, catalog no. 33R-8323, is also available for use as a blocking control in assays to test for specificity of this SCFD1 antibody
Restrictions:	For Research Use only

Handling

Format:	Lyophilized
Reconstitution:	Lyophilized powder. Add distilled water for a 1 mg/mL concentration of SCFD1 antibody in PBS
Concentration:	Lot specific
Buffer:	PBS
Handling Advice:	Avoid repeated freeze/thaw cycles. Dilute only prior to immediate use.
Storage:	4 °C/-20 °C
Storage Comment:	Store at 2-8 °C for short periods. For longer periods of storage, store at -20 °C.

Images



Western Blotting

Image 1. SCFD1 antibody used at 1 ug/ml to detect target protein.