

Datasheet for ABIN632407
anti-TMED8 antibody (Middle Region)



[Go to Product page](#)

1 Image

Overview

Quantity:	100 µL
Target:	TMED8
Binding Specificity:	Middle Region
Reactivity:	Human, Mouse, Rat
Host:	Rabbit
Clonality:	Polyclonal
Conjugate:	This TMED8 antibody is un-conjugated
Application:	Western Blotting (WB)

Product Details

Immunogen:	TMED8 antibody was raised using the middle region of TMED8 corresponding to a region with amino acids EIEEPVPAGDVERGSRSSLRGRYGEVMPVYRRDSHRDVQAGSHDYPGEGI
Specificity:	TMED8 antibody was raised against the middle region of TMED8
Purification:	Affinity purified

Target Details

Target:	TMED8
Alternative Name:	TMED8 (TMED8 Products)
Background:	The function of TMED8 protein is not widely studied, and is yet to be elucidated fully.
Molecular Weight:	36 kDa (MW of target protein)

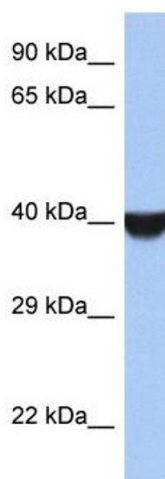
Application Details

Application Notes:	WB: 1 µg/mL Optimal conditions should be determined by the investigator.
Comment:	TMED8 Blocking Peptide, catalog no. 33R-2466, is also available for use as a blocking control in assays to test for specificity of this TMED8 antibody
Restrictions:	For Research Use only

Handling

Format:	Lyophilized
Reconstitution:	Lyophilized powder. Add distilled water for a 1 mg/mL concentration of TMED8 antibody in PBS
Concentration:	Lot specific
Buffer:	PBS
Handling Advice:	Avoid repeated freeze/thaw cycles. Dilute only prior to immediate use.
Storage:	4 °C/-20 °C
Storage Comment:	Store at 2-8 °C for short periods. For longer periods of storage, store at -20 °C.

Images



Western Blotting

Image 1. TMED8 antibody used at 1 ug/ml to detect target protein.