

Datasheet for ABIN632413 **anti-LIN37 antibody**

1 Image



[Go to Product page](#)

Overview

Quantity:	100 µL
Target:	LIN37
Reactivity:	Human
Host:	Rabbit
Clonality:	Polyclonal
Conjugate:	This LIN37 antibody is un-conjugated
Application:	Western Blotting (WB)

Product Details

Immunogen:	LIN37 antibody was raised using a synthetic peptide corresponding to a region with amino acids HQRKKRREMDDGLAEGGPQRSNTYVIKLFDRSVDLAQFSENTPLYICR
Purification:	Affinity purified

Target Details

Target:	LIN37
Alternative Name:	LIN37 (LIN37 Products)
Background:	This gene encodes a protein expressed in the eye.
Molecular Weight:	28 kDa (MW of target protein)
Pathways:	Cell Division Cycle, Mitotic G1-G1/S Phases

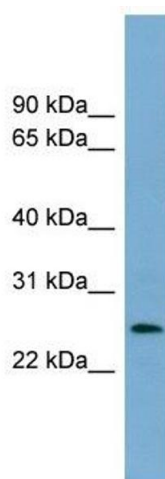
Application Details

Application Notes:	WB: 1 µg/mL Optimal conditions should be determined by the investigator.
Comment:	LIN37 Blocking Peptide, catalog no. 33R-3828, is also available for use as a blocking control in assays to test for specificity of this LIN37 antibody
Restrictions:	For Research Use only

Handling

Format:	Lyophilized
Reconstitution:	Lyophilized powder. Add distilled water for a 1 mg/mL concentration of LIN37 antibody in PBS
Concentration:	Lot specific
Buffer:	PBS
Handling Advice:	Avoid repeated freeze/thaw cycles.
Storage:	4 °C/-20 °C
Storage Comment:	Store at 2-8 °C for short periods. For longer periods of storage, store at -20 °C.

Images



Western Blotting

Image 1. LIN37 antibody used at 1 ug/ml to detect target protein.