

## Datasheet for ABIN632415 **anti-ABHD5 antibody (C-Term)**

[Go to Product page](#)

### 1 Image

#### Overview

Quantity:	100 µL
Target:	ABHD5
Binding Specificity:	C-Term
Reactivity:	Human, Mouse, Rat
Host:	Rabbit
Clonality:	Polyclonal
Conjugate:	This ABHD5 antibody is un-conjugated
Application:	Western Blotting (WB)

#### Product Details

Immunogen:	ABHD5 antibody was raised using the C terminal of ABHD5 corresponding to a region with amino acids SVIFGARSCIDGNSGTSIQSLRPHSYVKTIILGAGHYVYADQPEEFNQK
Specificity:	ABHD5 antibody was raised against the C terminal of ABHD5
Purification:	Affinity purified

#### Target Details

Target:	ABHD5
Alternative Name:	ABHD5 ( <a href="#">ABHD5 Products</a> )
Background:	ABHD5 belongs to a large family of proteins defined by an alpha/beta hydrolase fold, and contains three sequence motifs that correspond to a catalytic triad found in the esterase/lipase/thioesterase subfamily. It differs from other members of this subfamily in that

## Target Details

its putative catalytic triad contains an asparagine instead of the serine residue. Mutations in this gene have been associated with Chanarin-Dorfman syndrome, a triglyceride storage disease with impaired long-chain fatty acid oxidation.

Molecular Weight: 38 kDa (MW of target protein)

Pathways: [Lipid Metabolism](#)

## Application Details

Application Notes: WB: 1 µg/mL  
Optimal conditions should be determined by the investigator.

Comment: ABHD5 Blocking Peptide, catalog no. 33R-8912, is also available for use as a blocking control in assays to test for specificity of this ABHD5 antibody

Restrictions: For Research Use only

## Handling

Format: Lyophilized

Reconstitution: Lyophilized powder. Add distilled water for a 1 mg/mL concentration of ABHD5 antibody in PBS

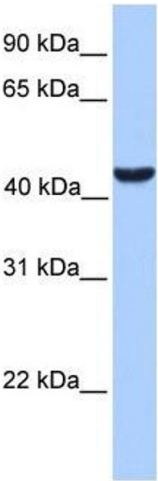
Concentration: Lot specific

Buffer: PBS

Handling Advice: Avoid repeated freeze/thaw cycles.  
Dilute only prior to immediate use.

Storage: 4 °C/-20 °C

Storage Comment: Store at 2-8 °C for short periods. For longer periods of storage, store at -20 °C.



Western Blotting

**Image 1.** ABHD5 antibody used at 1 ug/ml to detect target protein.