

Datasheet for ABIN632417
anti-C1orf116 antibody (Middle Region)



[Go to Product page](#)

1 Image

Overview

Quantity:	100 µL
Target:	C1orf116 (c1orf116)
Binding Specificity:	Middle Region
Reactivity:	Human, Mouse, Rat
Host:	Rabbit
Clonality:	Polyclonal
Conjugate:	This C1orf116 antibody is un-conjugated
Application:	Western Blotting (WB)

Product Details

Immunogen:	C1 ORF116 antibody was raised using the middle region of C1 rf116 corresponding to a region with amino acids SGLTLQESNTPGLRQMNFKSNTLERSGVGLSSYLSTEKDASPKTSTSLGK
Specificity:	C1 ORF116 antibody was raised against the middle region of C1 rf116
Purification:	Affinity purified

Target Details

Target:	C1orf116 (c1orf116)
Alternative Name:	C10RF116 (c1orf116 Products)
Background:	C1orf116 belongs to the SARG family. It is a putative androgen-specific receptor. It is highly expressed in prostate.

Target Details

Molecular Weight: 37 kDa (MW of target protein)

Application Details

Application Notes: WB: 1 µg/mL
Optimal conditions should be determined by the investigator.

Comment: C10RF116 Blocking Peptide, catalog no. 33R-8474, is also available for use as a blocking control in assays to test for specificity of this C10RF116 antibody

Restrictions: For Research Use only

Handling

Format: Lyophilized

Reconstitution: Lyophilized powder. Add distilled water for a 1 mg/mL concentration of C0 RF116 antibody in PBS

Concentration: Lot specific

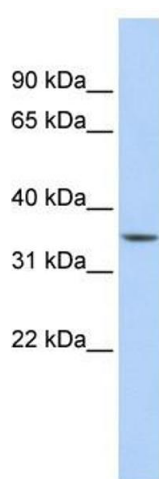
Buffer: PBS

Handling Advice: Avoid repeated freeze/thaw cycles.
Dilute only prior to immediate use.

Storage: 4 °C/-20 °C

Storage Comment: Store at 2-8 °C for short periods. For longer periods of storage, store at -20 °C.

Images



Western Blotting

Image 1. C10RF116 antibody used at 1 ug/ml to detect target protein.