

## Datasheet for ABIN632422 **anti-EIF2B1 antibody (C-Term)**



[Go to Product page](#)

### 1 Image

#### Overview

Quantity:	100 µL
Target:	EIF2B1
Binding Specificity:	C-Term
Reactivity:	Human
Host:	Rabbit
Clonality:	Polyclonal
Conjugate:	This EIF2B1 antibody is un-conjugated
Application:	Western Blotting (WB)

#### Product Details

Immunogen:	EIF2 B1 antibody was raised using the C terminal of EIF2 1 corresponding to a region with amino acids ADTLKVAQTGQDLKEEHPWVDYTAPSLITLLFTDLGVLTPSAVSDLIKL
Specificity:	EIF2 B1 antibody was raised against the C terminal of EIF2 1
Purification:	Affinity purified

#### Target Details

Target:	EIF2B1
Alternative Name:	EIF2B1 ( <a href="#">EIF2B1 Products</a> )
Background:	EIF2B1 belongs to the EIF-2B alpha/beta/delta subunits family. It catalyzes the exchange of eukaryotic initiation factor 2-bound GDP for GTP. Defects in EIF2B1 are a cause of leukoencephalopathy with vanishing white matter (VWM).

## Target Details

Molecular Weight: 34 kDa (MW of target protein)

Pathways: [Methionine Biosynthetic Process](#)

## Application Details

Application Notes: WB: 1 µg/mL

Optimal conditions should be determined by the investigator.

Comment: EIF2B1 Blocking Peptide, catalog no. 33R-1107, is also available for use as a blocking control in assays to test for specificity of this EIF2B1 antibody

Restrictions: For Research Use only

## Handling

Format: Lyophilized

Reconstitution: Lyophilized powder. Add distilled water for a 1 mg/mL concentration of EIF0 1 antibody in PBS

Concentration: Lot specific

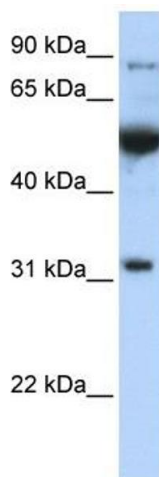
Buffer: PBS

Handling Advice: Avoid repeated freeze/thaw cycles.  
Dilute only prior to immediate use.

Storage: 4 °C/-20 °C

Storage Comment: Store at 2-8 °C for short periods. For longer periods of storage, store at -20 °C.

## Images



### Western Blotting

**Image 1.** EIF2B1 antibody used at 1 µg/ml to detect target protein.