

Datasheet for ABIN632434
anti-MAGEA8 antibody (N-Term)



[Go to Product page](#)

2 Images

Overview

Quantity:	100 µL
Target:	MAGEA8
Binding Specificity:	N-Term
Reactivity:	Human
Host:	Rabbit
Clonality:	Polyclonal
Conjugate:	This MAGEA8 antibody is un-conjugated
Application:	Western Blotting (WB), Immunohistochemistry (IHC)

Product Details

Immunogen:	MAGEA8 antibody was raised using the N terminal of MAGEA8 corresponding to a region with amino acids EEVTDSGSPSPQSPGASSSLTVTDSTLWSQSDEGSSSNEEEGPSTSPD
Specificity:	MAGEA8 antibody was raised against the N terminal of MAGEA8
Purification:	Affinity purified

Target Details

Target:	MAGEA8
Alternative Name:	MAGEA8 (MAGEA8 Products)
Background:	MAGEA8 is a member of the MAGEA family. The members of this family with 50 to 80% sequence identity to each other. They have been implicated in some hereditary disorders, such as dyskeratosis congenita.

Target Details

Molecular Weight: 35 kDa (MW of target protein)

Application Details

Application Notes: WB: 0.5 µg/mL, IHC: 4-8 µg/mL
Optimal conditions should be determined by the investigator.

Comment: MAGEA8 Blocking Peptide, catalog no. 33R-2398, is also available for use as a blocking control in assays to test for specificity of this MAGEA8 antibody

Restrictions: For Research Use only

Handling

Format: Lyophilized

Reconstitution: Lyophilized powder. Add distilled water for a 1 mg/mL concentration of MAGEA8 antibody in PBS

Concentration: Lot specific

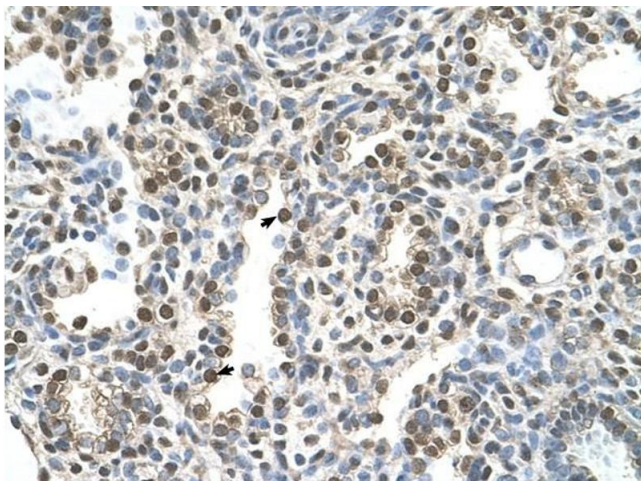
Buffer: PBS

Handling Advice: Avoid repeated freeze/thaw cycles.
Dilute only prior to immediate use.

Storage: 4 °C/-20 °C

Storage Comment: Store at 2-8 °C for short periods. For longer periods of storage, store at -20 °C.

Images



Immunohistochemistry

Image 1. MAGEA8 antibody was used for immunohistochemistry at a concentration of 16.0 ug/ml to stain Alveolar cells (arrows) in Human Lung. Magnification is at 400X



Western Blotting

Image 2. MAGEA8 antibody used at 0.5 ug/ml to detect target protein.