

Datasheet for ABIN632436
anti-COBLL1 antibody (N-Term)



[Go to Product page](#)

3 Images

Overview

Quantity:	100 µL
Target:	COBLL1
Binding Specificity:	N-Term
Reactivity:	Human, Dog, Mouse, Rat
Host:	Rabbit
Clonality:	Polyclonal
Conjugate:	This COBLL1 antibody is un-conjugated
Application:	Western Blotting (WB), Immunohistochemistry (IHC)

Product Details

Immunogen:	Cobl-Like 1 antibody was raised using the N terminal of COBLL1 corresponding to a region with amino acids SAPATPLV NKHRPTFTRSN TISKPYISNTLPSDAPKKRRAPLPMPASQS
Specificity:	Cobl-Like 1 antibody was raised against the N terminal of COBLL1
Purification:	Affinity purified

Target Details

Target:	COBLL1
Alternative Name:	Cobl-Like 1 (COBLL1 Products)
Background:	The function of this gene remains unknown.
Molecular Weight:	128 kDa (MW of target protein)

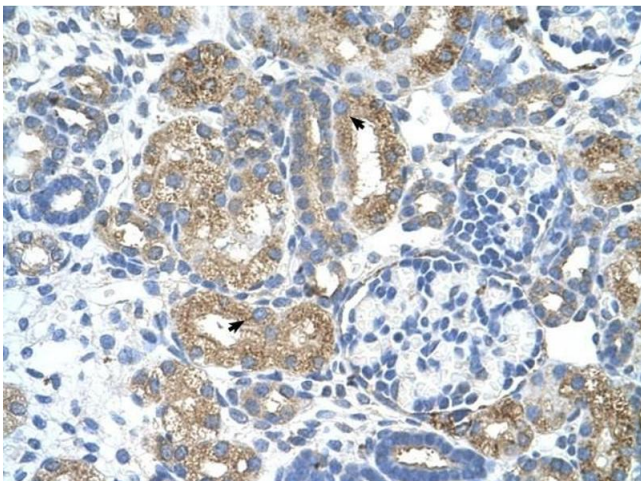
Application Details

Application Notes:	WB: 0.5 µg/mL, IHC: 4-8 µg/mL Optimal conditions should be determined by the investigator.
Comment:	Cobl-Like 1 Blocking Peptide, catalog no. 33R-8308, is also available for use as a blocking control in assays to test for specificity of this Cobl-Like 1 antibody
Restrictions:	For Research Use only

Handling

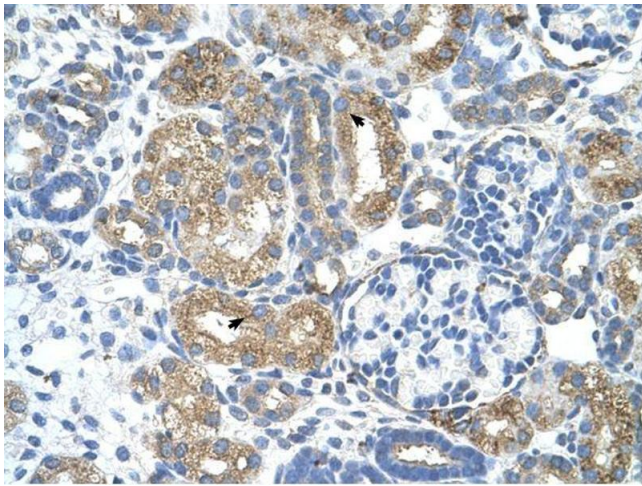
Format:	Lyophilized
Reconstitution:	Lyophilized powder. Add distilled water for a 1 mg/mL concentration of COBLL1 antibody in PBS
Concentration:	Lot specific
Buffer:	PBS
Handling Advice:	Avoid repeated freeze/thaw cycles. Dilute only prior to immediate use.
Storage:	4 °C/-20 °C
Storage Comment:	Store at 2-8 °C for short periods. For longer periods of storage, store at -20 °C.

Images



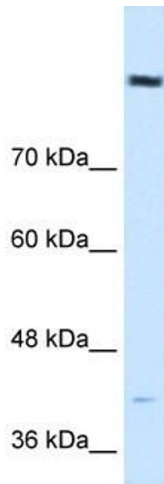
Immunohistochemistry

Image 1. Cobl-Like 1 antibody was used for immunohistochemistry at a concentration of 4-8 ug/ml to stain Epithelial cells of renal tubule (arrows) in Human Kidney. Magnification is at 400X



Immunohistochemistry

Image 2. Cobl-Like 1 antibody was used for immunohistochemistry at a concentration of 4-8 ug/ml. Magnification is at 400X



Western Blotting

Image 3. Cobl-Like 1 antibody used at 0.5 ug/ml to detect target protein.