

Datasheet for ABIN632446
anti-PLEKHA1 antibody (N-Term)



[Go to Product page](#)

1 Image

Overview

Quantity:	100 µL
Target:	PLEKHA1
Binding Specificity:	N-Term
Reactivity:	Human
Host:	Rabbit
Clonality:	Polyclonal
Conjugate:	This PLEKHA1 antibody is un-conjugated
Application:	Western Blotting (WB)

Product Details

Immunogen:	PLEKHA1 antibody was raised using the N terminal of PLEKHA1 corresponding to a region with amino acids LNKAIKITVPKQSDSQNSDNLRSRHGECGKKQVSYRTDIVGGVPIITPTQ
Specificity:	PLEKHA1 antibody was raised against the N terminal of PLEKHA1
Purification:	Affinity purified

Target Details

Target:	PLEKHA1
Alternative Name:	PLEKHA1 (PLEKHA1 Products)
Background:	PLEKHA1 binds specifically to phosphatidylinositol-3,4-diphosphate (PtdIns3,4P2), but not to other phosphoinositides. PLEKHA1 may recruit other proteins to the plasma membrane.

Target Details

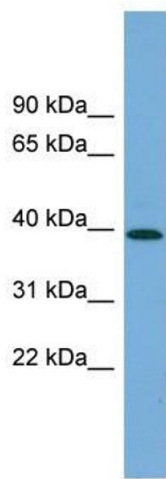
Molecular Weight:	45 kDa (MW of target protein)
Pathways:	Platelet-derived growth Factor Receptor Signaling

Application Details

Application Notes:	WB: 1 µg/mL Optimal conditions should be determined by the investigator.
Comment:	PLEKHA1 Blocking Peptide, catalog no. 33R-5226, is also available for use as a blocking control in assays to test for specificity of this PLEKHA1 antibody
Restrictions:	For Research Use only

Handling

Format:	Lyophilized
Reconstitution:	Lyophilized powder. Add distilled water for a 1 mg/mL concentration of PLEKHA1 antibody in PBS
Concentration:	Lot specific
Buffer:	PBS
Handling Advice:	Avoid repeated freeze/thaw cycles. Dilute only prior to immediate use.
Storage:	4 °C/-20 °C
Storage Comment:	Store at 2-8 °C for short periods. For longer periods of storage, store at -20 °C.



Western Blotting

Image 1. PLEKHA1 antibody used at 1 ug/ml to detect target protein.