

Datasheet for ABIN632458

anti-GBX1 antibody (Middle Region)[Go to Product page](#)**1** Image

Overview

Quantity:	100 µL
Target:	GBX1
Binding Specificity:	Middle Region
Reactivity:	Human, Mouse, Rat, Drosophila melanogaster
Host:	Rabbit
Clonality:	Polyclonal
Conjugate:	This GBX1 antibody is un-conjugated
Application:	Western Blotting (WB)

Product Details

Immunogen:	GBX1 antibody was raised using the middle region of Gbx-1 corresponding to a region with amino acids AKWKRIKAGNVSSRSGEPVRNPKIVVPIPVHVNRFVRSQHQQMEQGARP
Specificity:	GBX1 antibody was raised against the middle region of Gbx-1
Purification:	Affinity purified

Target Details

Target:	GBX1
Alternative Name:	GBX1 (GBX1 Products)
Background:	GBX-1 contains 1 homeobox DNA-binding domain. The exact functions of GBX-1 remain unknown.

Target Details

Molecular Weight: 40 kDa (MW of target protein)

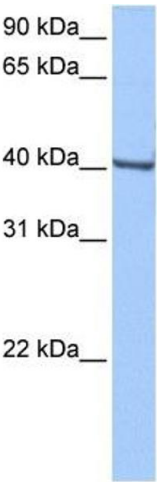
Application Details

Application Notes:	WB: 0.5 µg/mL Optimal conditions should be determined by the investigator.
Comment:	GBX1 Blocking Peptide, catalog no. 33R-1314, is also available for use as a blocking control in assays to test for specificity of this GBX1 antibody
Restrictions:	For Research Use only

Handling

Format:	Lyophilized
Reconstitution:	Lyophilized powder. Add distilled water for a 1 mg/mL concentration of GBX-1 antibody in PBS
Concentration:	Lot specific
Buffer:	PBS
Handling Advice:	Avoid repeated freeze/thaw cycles. Dilute only prior to immediate use.
Storage:	4 °C/-20 °C
Storage Comment:	Store at 2-8 °C for short periods. For longer periods of storage, store at -20 °C.

Images



Western Blotting

Image 1. GBX1 antibody used at 0.5 ug/ml to detect target protein.