

## Datasheet for ABIN632466 **anti-MAGEB3 antibody (N-Term)**



[Go to Product page](#)

### 1 Image

#### Overview

Quantity:	100 µL
Target:	MAGEB3
Binding Specificity:	N-Term
Reactivity:	Human
Host:	Rabbit
Clonality:	Polyclonal
Conjugate:	This MAGEB3 antibody is un-conjugated
Application:	Western Blotting (WB)

#### Product Details

Immunogen:	MAGEB3 antibody was raised using the N terminal of MAGEB3 corresponding to a region with amino acids MPRGQKSTLHAREKRQQTRGQTQDHQGAQITATNKKKVSFSSPLILGATI
Specificity:	MAGEB3 antibody was raised against the N terminal of MAGEB3
Purification:	Affinity purified

#### Target Details

Target:	MAGEB3
Alternative Name:	MAGEB3 ( <a href="#">MAGEB3 Products</a> )
Background:	This gene is a MAGE-B subfamily member of the MAGE gene family. MAGE family member proteins direct the expression of tumor antigens recognised on a human melanoma by autologous cytolytic T lymphocytes. There are two known clusters of MAGE genes on chromos

## Target Details

---

Molecular Weight: 39 kDa (MW of target protein)

## Application Details

---

Application Notes: WB: 1 µg/mL  
Optimal conditions should be determined by the investigator.

Comment: MAGEB3 Blocking Peptide, catalog no. 33R-6303, is also available for use as a blocking control in assays to test for specificity of this MAGEB3 antibody

Restrictions: For Research Use only

## Handling

---

Format: Lyophilized

Reconstitution: Lyophilized powder. Add distilled water for a 1 mg/mL concentration of MAGEB3 antibody in PBS

Concentration: Lot specific

Buffer: PBS

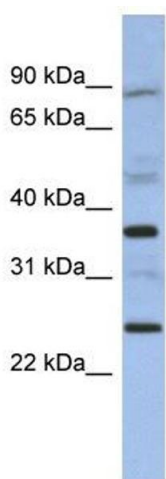
Handling Advice: Avoid repeated freeze/thaw cycles.  
Dilute only prior to immediate use.

Storage: 4 °C/-20 °C

Storage Comment: Store at 2-8 °C for short periods. For longer periods of storage, store at -20 °C.

## Images

---



### Western Blotting

**Image 1.** MAGEB3 antibody used at 1 ug/ml to detect target protein.