

Datasheet for ABIN632467
anti-PMM1 antibody (N-Term)



[Go to Product page](#)

1 Image

Overview

Quantity:	100 µL
Target:	PMM1
Binding Specificity:	N-Term
Reactivity:	Human, Mouse, Rat
Host:	Rabbit
Clonality:	Polyclonal
Conjugate:	This PMM1 antibody is un-conjugated
Application:	Western Blotting (WB)

Product Details

Immunogen:	PMM1 antibody was raised using the N terminal of PMM1 corresponding to a region with amino acids MAVTAQAARRKERVLCFLFDVDGTLTPARQKIDPEVA AFLQKLR SRVQIGV
Specificity:	PMM1 antibody was raised against the N terminal of PMM1
Purification:	Affinity purified

Target Details

Target:	PMM1
Alternative Name:	PMM1 (PMM1 Products)
Background:	Phosphomannomutase catalyzes the conversion between D-mannose 6-phosphate and D-mannose 1-phosphate which is a substrate for GDP-mannose synthesis. GDP-mannose is used for synthesis of dolichol-phosphate-mannose, which is essential for N-linked glycosylation

Target Details

Molecular Weight: 30 kDa (MW of target protein)

Application Details

Application Notes: WB: 1 µg/mL
Optimal conditions should be determined by the investigator.

Comment: PMM1 Blocking Peptide, catalog no. 33R-5802, is also available for use as a blocking control in assays to test for specificity of this PMM1 antibody

Restrictions: For Research Use only

Handling

Format: Lyophilized

Reconstitution: Lyophilized powder. Add distilled water for a 1 mg/mL concentration of PMM1 antibody in PBS

Concentration: Lot specific

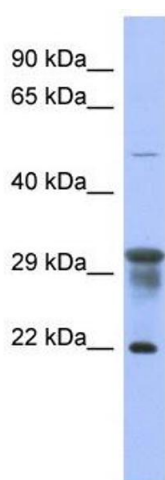
Buffer: PBS

Handling Advice: Avoid repeated freeze/thaw cycles.
Dilute only prior to immediate use.

Storage: 4 °C/-20 °C

Storage Comment: Store at 2-8 °C for short periods. For longer periods of storage, store at -20 °C.

Images



Western Blotting

Image 1. PMM1 antibody used at 1 µg/ml to detect target protein.