

Datasheet for ABIN632473  
**anti-TRAPPC2L antibody (N-Term)**



[Go to Product page](#)

1 Image

## Overview

Quantity:	100 µL
Target:	TRAPPC2L
Binding Specificity:	N-Term
Reactivity:	Human, Mouse, Rat
Host:	Rabbit
Clonality:	Polyclonal
Conjugate:	This TRAPPC2L antibody is un-conjugated
Application:	Western Blotting (WB)

## Product Details

Immunogen:	TRAPPC2 L antibody was raised using the N terminal of TRAPPC2 corresponding to a region with amino acids MAVCIAVIAKENYPLYIRSTPTENELKFHYMVHTSLDVVDEKISAMGKAL
Specificity:	TRAPPC2 L antibody was raised against the N terminal of TRAPPC2
Purification:	Affinity purified

## Target Details

Target:	TRAPPC2L
Abstract:	<a href="#">TRAPPC2L Products</a>
Background:	TRAPPC2L may play a role in vesicular transport from endoplasmic reticulum to Golgi.
Molecular Weight:	16 kDa (MW of target protein)

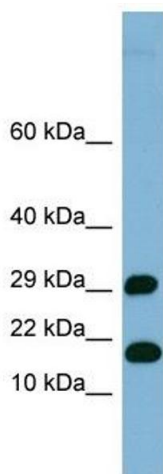
## Application Details

Application Notes:	WB: 1 µg/mL Optimal conditions should be determined by the investigator.
Comment:	TRAPPC2L Blocking Peptide, catalog no. 33R-5796, is also available for use as a blocking control in assays to test for specificity of this TRAPPC2L antibody
Restrictions:	For Research Use only

## Handling

Format:	Lyophilized
Reconstitution:	Lyophilized powder. Add distilled water for a 1 mg/mL concentration of TRAPPC0 antibody in PBS
Concentration:	Lot specific
Buffer:	PBS
Handling Advice:	Avoid repeated freeze/thaw cycles. Dilute only prior to immediate use.
Storage:	4 °C/-20 °C
Storage Comment:	Store at 2-8 °C for short periods. For longer periods of storage, store at -20 °C.

## Images



### Western Blotting

**Image 1.** TRAPPC2L antibody used at 1 ug/ml to detect target protein.