

Datasheet for ABIN632485
anti-TBC1D16 antibody (N-Term)



[Go to Product page](#)

1 Image

Overview

Quantity:	100 µL
Target:	TBC1D16
Binding Specificity:	N-Term
Reactivity:	Human
Host:	Rabbit
Clonality:	Polyclonal
Conjugate:	This TBC1D16 antibody is un-conjugated
Application:	Western Blotting (WB)

Product Details

Immunogen:	TBC1 D16 antibody was raised using the N terminal of TBC1 16 corresponding to a region with amino acids EMLGATLILAWVPNSRIQRQDEEALRYITPESSPVRKAPRPRGRTRSSG
Specificity:	TBC1 D16 antibody was raised against the N terminal of TBC1 16
Purification:	Affinity purified

Target Details

Target:	TBC1D16
Alternative Name:	TBC1D16 (TBC1D16 Products)
Background:	TBC1D16 may act as a GTPase-activating protein for Rab family proteins.
Molecular Weight:	86 kDa (MW of target protein)

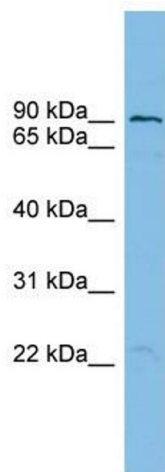
Application Details

Application Notes:	WB: 1 µg/mL Optimal conditions should be determined by the investigator.
Comment:	TBC1D16 Blocking Peptide, catalog no. 33R-2588, is also available for use as a blocking control in assays to test for specificity of this TBC1D16 antibody
Restrictions:	For Research Use only

Handling

Format:	Lyophilized
Reconstitution:	Lyophilized powder. Add distilled water for a 1 mg/mL concentration of TBC0 16 antibody in PBS
Concentration:	Lot specific
Buffer:	PBS
Handling Advice:	Avoid repeated freeze/thaw cycles. Dilute only prior to immediate use.
Storage:	4 °C/-20 °C
Storage Comment:	Store at 2-8 °C for short periods. For longer periods of storage, store at -20 °C.

Images



Western Blotting

Image 1. TBC1D16 antibody used at 1 ug/ml to detect target protein.