

Datasheet for ABIN632502  
**anti-MYH1 antibody (N-Term)**



[Go to Product page](#)

1 Image

## Overview

Quantity:	100 µL
Target:	MYH1
Binding Specificity:	N-Term
Reactivity:	Human, Mouse, Rat
Host:	Rabbit
Clonality:	Polyclonal
Conjugate:	This MYH1 antibody is un-conjugated
Application:	Western Blotting (WB)

## Product Details

Immunogen:	MYH1 antibody was raised using the N terminal of MYH1 corresponding to a region with amino acids KTSV FV VDPKESFVKATVQSREGGKVTAKTEAGATVTVKDDQV FPMNPPK
Specificity:	MYH1 antibody was raised against the N terminal of MYH1
Purification:	Affinity purified

## Target Details

Target:	MYH1
Alternative Name:	MYH1 ( <a href="#">MYH1 Products</a> )
Background:	Myosin is a major contractile protein which converts chemical energy into mechanical energy through the hydrolysis of ATP.

## Target Details

---

Molecular Weight: 223 kDa (MW of target protein)

## Application Details

---

Application Notes: WB: 1 µg/mL  
Optimal conditions should be determined by the investigator.

Comment: MYH1 Blocking Peptide, catalog no. 33R-4695, is also available for use as a blocking control in assays to test for specificity of this MYH1 antibody

Restrictions: For Research Use only

## Handling

---

Format: Lyophilized

Reconstitution: Lyophilized powder. Add distilled water for a 1 mg/mL concentration of MYH1 antibody in PBS

Concentration: Lot specific

Buffer: PBS

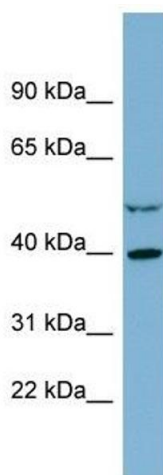
Handling Advice: Avoid repeated freeze/thaw cycles.  
Dilute only prior to immediate use.

Storage: 4 °C/-20 °C

Storage Comment: Store at 2-8 °C for short periods. For longer periods of storage, store at -20 °C.

## Images

---



### Western Blotting

**Image 1.** MYH1 antibody used at 1 ug/ml to detect target protein.