

Datasheet for ABIN632513 **anti-PPP4R2 antibody (C-Term)**



[Go to Product page](#)

1 Image

Overview

Quantity:	100 µL
Target:	PPP4R2
Binding Specificity:	C-Term
Reactivity:	Human, Mouse, Rat
Host:	Rabbit
Clonality:	Polyclonal
Conjugate:	This PPP4R2 antibody is un-conjugated
Application:	Western Blotting (WB)

Product Details

Immunogen:	PPP4 R2 antibody was raised using the C terminal of PPP4 2 corresponding to a region with amino acids DSRCTRQHCTEEDDEEEDEEEEEESFMTSREMIPERKNQEKESDDALTVNE
Specificity:	PPP4 R2 antibody was raised against the C terminal of PPP4 2
Purification:	Affinity purified

Target Details

Target:	PPP4R2
Alternative Name:	PPP4R2 (PPP4R2 Products)
Background:	PPP4R2 is the regulatory subunit of serine/threonine-protein phosphatase 4 (PP4). It may regulate the activity of PPP4C at centrosomal microtubule organizing centers. Its interaction with the SMN complex leads to enhance the temporal localization of snRNPs, suggesting a role

Target Details

of PPP4C in maturation of spliceosomal snRNPs. The PPP4C-PPP4R2-PPP4R3A PP4 complex specifically dephosphorylates H2AFX phosphorylated on 'Ser-140' (gamma-H2AFX) generated during DNA replication and required for DNA DSB repair.

Molecular Weight: 47 kDa (MW of target protein)

Application Details

Application Notes: WB: 1 µg/mL
Optimal conditions should be determined by the investigator.

Comment: PPP4R2 Blocking Peptide, catalog no. 33R-2177, is also available for use as a blocking control in assays to test for specificity of this PPP4R2 antibody

Restrictions: For Research Use only

Handling

Format: Lyophilized

Reconstitution: Lyophilized powder. Add distilled water for a 1 mg/mL concentration of PPP0 2 antibody in PBS

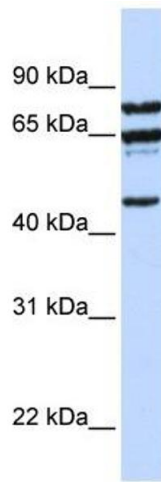
Concentration: Lot specific

Buffer: PBS

Handling Advice: Avoid repeated freeze/thaw cycles.
Dilute only prior to immediate use.

Storage: 4 °C/-20 °C

Storage Comment: Store at 2-8 °C for short periods. For longer periods of storage, store at -20 °C.



Western Blotting

Image 1. PPP4R2 antibody used at 1 ug/ml to detect target protein.