

Datasheet for ABIN632521
anti-C2orf42 antibody (N-Term)



[Go to Product page](#)

1 Image

Overview

Quantity:	100 µL
Target:	C2orf42
Binding Specificity:	N-Term
Reactivity:	Human, Rat, Mouse
Host:	Rabbit
Clonality:	Polyclonal
Conjugate:	This C2orf42 antibody is un-conjugated
Application:	Western Blotting (WB)

Product Details

Immunogen:	C2 ORF42 antibody was raised using the N terminal Of C2 rf42 corresponding to a region with amino acids EPNSLRTKVPAFLSDLGKATLRGIRKPCRCGTYNGTRGLSCKNKTCGTIF
Specificity:	C2 ORF42 antibody was raised against the N terminal Of C2 rf42
Purification:	Affinity purified

Target Details

Target:	C2orf42
Alternative Name:	C2ORF42 (C2orf42 Products)
Background:	The function of C2orf42 protein has not been widely studied, and is yet to be fully elucidated.
Molecular Weight:	63 kDa (MW of target protein)

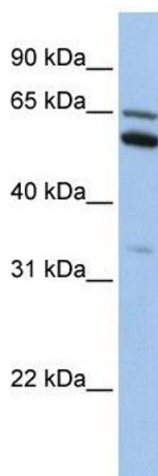
Application Details

Application Notes:	WB: 1 µg/mL Optimal conditions should be determined by the investigator.
Comment:	C2ORF42 Blocking Peptide, catalog no. 33R-2639, is also available for use as a blocking control in assays to test for specificity of this C2ORF42 antibody
Restrictions:	For Research Use only

Handling

Format:	Lyophilized
Reconstitution:	Lyophilized powder. Add distilled water for a 1 mg/mL concentration of C0 RF42 antibody in PBS
Concentration:	Lot specific
Buffer:	PBS
Handling Advice:	Avoid repeated freeze/thaw cycles. Dilute only prior to immediate use.
Storage:	4 °C/-20 °C
Storage Comment:	Store at 2-8 °C for short periods. For longer periods of storage, store at -20 °C.

Images



Western Blotting

Image 1. C2ORF42 antibody used at 1 ug/ml to detect target protein.