

Datasheet for ABIN632535 **anti-KCTD16 antibody (N-Term)**



[Go to Product page](#)

1 Image

Overview

Quantity:	100 µL
Target:	KCTD16
Binding Specificity:	N-Term
Reactivity:	Human
Host:	Rabbit
Clonality:	Polyclonal
Conjugate:	This KCTD16 antibody is un-conjugated
Application:	Western Blotting (WB)

Product Details

Immunogen:	KCTD16 antibody was raised using the N terminal of KCTD16 corresponding to a region with amino acids KREAEIFQLPDLVKLLTPDEIKQSPDEFCHSDFEDASQGS DTRICPPSSL
Specificity:	KCTD16 antibody was raised against the N terminal of KCTD16
Purification:	Affinity purified

Target Details

Target:	KCTD16
Alternative Name:	KCTD16 (KCTD16 Products)
Background:	KCTD16 is an auxiliary subunit of GABA-B receptors that determine the pharmacology and kinetics of the receptor response. It increases agonist potency and markedly alter the G-protein signaling of the receptors by accelerating onset and promoting desensitization.

Target Details

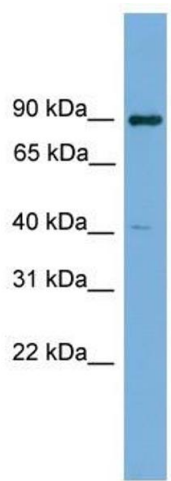
Molecular Weight:	49 kDa (MW of target protein)
Pathways:	Synaptic Membrane , Regulation of G-Protein Coupled Receptor Protein Signaling

Application Details

Application Notes:	WB: 1 µg/mL Optimal conditions should be determined by the investigator.
Comment:	KCTD16 Blocking Peptide, catalog no. 33R-4621, is also available for use as a blocking control in assays to test for specificity of this KCTD16 antibody
Restrictions:	For Research Use only

Handling

Format:	Lyophilized
Reconstitution:	Lyophilized powder. Add distilled water for a 1 mg/mL concentration of KCTD16 antibody in PBS
Concentration:	Lot specific
Buffer:	PBS
Handling Advice:	Avoid repeated freeze/thaw cycles. Dilute only prior to immediate use.
Storage:	4 °C/-20 °C
Storage Comment:	Store at 2-8 °C for short periods. For longer periods of storage, store at -20 °C.



Western Blotting

Image 1. KCTD16 antibody used at 1 ug/ml to detect target protein.