

## Datasheet for ABIN632538 **anti-GM2A antibody (N-Term)**



[Go to Product page](#)

### 1 Image

#### Overview

Quantity:	100 µL
Target:	GM2A
Binding Specificity:	N-Term
Reactivity:	Human
Host:	Rabbit
Clonality:	Polyclonal
Conjugate:	This GM2A antibody is un-conjugated
Application:	Western Blotting (WB)

#### Product Details

Immunogen:	GM2 A antibody was raised using the N terminal of GM2 corresponding to a region with amino acids SWDNCDEGKDPAVIRSLTLEPDPIIVPGNVTL SVMGSTSVPLSSPLKVDL
Specificity:	GM2 A antibody was raised against the N terminal of GM2
Purification:	Affinity purified

#### Target Details

Target:	GM2A
Alternative Name:	GM2A ( <a href="#">GM2A Products</a> )
Background:	This gene encodes a small glycolipid transport protein which acts as a substrate specific co-factor for the lysosomal enzyme beta-hexosaminidase A. Beta-hexosaminidase A, together with GM2 ganglioside activator, catalyzes the degradation of the ganglioside GM2, and other

## Target Details

---

molecules containing terminal N-acetyl hexosamines. Mutations in this gene result in GM2-gangliosidosis type AB or the AB variant of Tay-Sachs disease. Alternative splicing results in multiple transcript variants.

Molecular Weight: 18 kDa (MW of target protein)

## Application Details

---

Application Notes: WB: 1 µg/mL  
Optimal conditions should be determined by the investigator.

Comment: GM2A Blocking Peptide, catalog no. 33R-8939, is also available for use as a blocking control in assays to test for specificity of this GM2A antibody

Restrictions: For Research Use only

## Handling

---

Format: Lyophilized

Reconstitution: Lyophilized powder. Add distilled water for a 1 mg/mL concentration of GM0 antibody in PBS

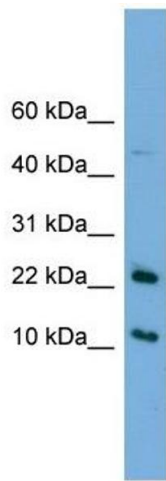
Concentration: Lot specific

Buffer: PBS

Handling Advice: Avoid repeated freeze/thaw cycles.  
Dilute only prior to immediate use.

Storage: 4 °C/-20 °C

Storage Comment: Store at 2-8 °C for short periods. For longer periods of storage, store at -20 °C.



### Western Blotting

**Image 1.** GM2A antibody used at 1 ug/ml to detect target protein.