

Datasheet for ABIN632541 **anti-GAS8 antibody (N-Term)**



[Go to Product page](#)

1 Image

Overview

Quantity:	100 µL
Target:	GAS8
Binding Specificity:	N-Term
Reactivity:	Human
Host:	Rabbit
Clonality:	Polyclonal
Conjugate:	This GAS8 antibody is un-conjugated
Application:	Western Blotting (WB)

Product Details

Immunogen:	GAS8 antibody was raised using the N terminal of GAS8 corresponding to a region with amino acids VSRIEELDREREERNYFQLERDKIHFWITRRQLEEKKAELRNKDREM
Specificity:	GAS8 antibody was raised against the N terminal of GAS8
Purification:	Affinity purified

Target Details

Target:	GAS8
Alternative Name:	GAS8 (GAS8 Products)
Background:	This gene includes 11 exons spanning 25 kb and maps to a region of chromosome 16 that is sometimes deleted in breast and prostate cancer. The second intron contains an apparently intronless gene, C16orf3, that is transcribed in the opposite orientation. This gene is a putative

Target Details

tumor suppressor gene.

Molecular Weight: 56 kDa (MW of target protein)

Application Details

Application Notes: WB: 1 µg/mL

Optimal conditions should be determined by the investigator.

Comment: GAS8 Blocking Peptide, catalog no. 33R-9820, is also available for use as a blocking control in assays to test for specificity of this GAS8 antibody

Restrictions: For Research Use only

Handling

Format: Lyophilized

Reconstitution: Lyophilized powder. Add distilled water for a 1 mg/mL concentration of GAS8 antibody in PBS

Concentration: Lot specific

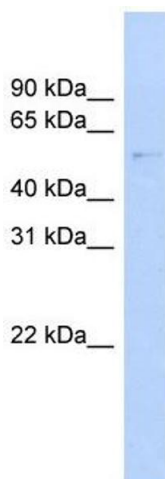
Buffer: PBS

Handling Advice: Avoid repeated freeze/thaw cycles.
Dilute only prior to immediate use.

Storage: 4 °C/-20 °C

Storage Comment: Store at 2-8 °C for short periods. For longer periods of storage, store at -20 °C.

Images



Western Blotting

Image 1. GAS8 antibody used at 1 ug/ml to detect target protein.