

Datasheet for ABIN632566
anti-PRSS22 antibody (N-Term)



[Go to Product page](#)

1 Image

Overview

Quantity:	100 µL
Target:	PRSS22
Binding Specificity:	N-Term
Reactivity:	Human
Host:	Rabbit
Clonality:	Polyclonal
Conjugate:	This PRSS22 antibody is un-conjugated
Application:	Western Blotting (WB)

Product Details

Immunogen:	PRSS22 antibody was raised using the N terminal of PRSS22 corresponding to a region with amino acids IPVPPACGKPPQLNRVVGGEDSTDSEWPWIVSIQKNGTHHCAGSLLTSRW
Specificity:	PRSS22 antibody was raised against the N terminal of PRSS22
Purification:	Affinity purified

Target Details

Target:	PRSS22
Alternative Name:	PRSS22 (PRSS22 Products)
Background:	This gene encodes a member of the trypsin family of serine proteases. The enzyme is expressed in the airways in a developmentally regulated manner. The gene is part of a cluster of serine protease genes on chromosome 16.

Target Details

Molecular Weight: 34 kDa (MW of target protein)

Application Details

Application Notes: WB: 1 µg/mL
Optimal conditions should be determined by the investigator.

Comment: PRSS22 Blocking Peptide, catalog no. 33R-4104, is also available for use as a blocking control in assays to test for specificity of this PRSS22 antibody

Restrictions: For Research Use only

Handling

Format: Lyophilized

Reconstitution: Lyophilized powder. Add distilled water for a 1 mg/mL concentration of PRSS22 antibody in PBS

Concentration: Lot specific

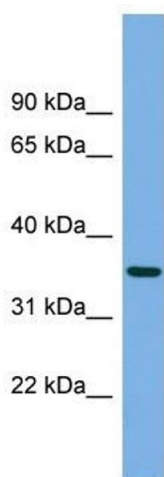
Buffer: PBS

Handling Advice: Avoid repeated freeze/thaw cycles.
Dilute only prior to immediate use.

Storage: 4 °C/-20 °C

Storage Comment: Store at 2-8 °C for short periods. For longer periods of storage, store at -20 °C.

Images



Western Blotting

Image 1. PRSS22 antibody used at 1 ug/ml to detect target protein.