

Datasheet for ABIN632578
anti-C18ORF25 antibody (N-Term)



[Go to Product page](#)

1 Image

Overview

Quantity:	100 µL
Target:	C18ORF25
Binding Specificity:	N-Term
Reactivity:	Human
Host:	Rabbit
Clonality:	Polyclonal
Conjugate:	This C18ORF25 antibody is un-conjugated
Application:	Western Blotting (WB)

Product Details

Immunogen:	C18 orf25 antibody was raised using the N terminal of C18 rf25 corresponding to a region with amino acids MKMEEAVGKVEELIESEAPPKASEQETAKEEDGSVELESQVQKDGVDST
Specificity:	C18 orf25 antibody was raised against the N terminal of C18 rf25
Purification:	Affinity purified

Target Details

Target:	C18ORF25
Alternative Name:	C18orf25 (C18ORF25 Products)
Background:	The function of C18orf25 protein has not been widely studied, and is yet to be fully elucidated.
Molecular Weight:	37 kDa (MW of target protein)

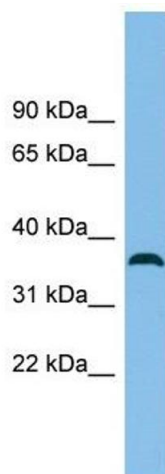
Application Details

Application Notes:	WB: 1 µg/mL Optimal conditions should be determined by the investigator.
Comment:	C18orf25 Blocking Peptide, catalog no. 33R-6153, is also available for use as a blocking control in assays to test for specificity of this C18orf25 antibody
Restrictions:	For Research Use only

Handling

Format:	Lyophilized
Reconstitution:	Lyophilized powder. Add distilled water for a 1 mg/mL concentration of C10 rf25 antibody in PBS
Concentration:	Lot specific
Buffer:	PBS
Handling Advice:	Avoid repeated freeze/thaw cycles. Dilute only prior to immediate use.
Storage:	4 °C/-20 °C
Storage Comment:	Store at 2-8 °C for short periods. For longer periods of storage, store at -20 °C.

Images



Western Blotting

Image 1. C18orf25 antibody used at 1 ug/ml to detect target protein.