

Datasheet for ABIN632582
anti-C2orf30 antibody (Middle Region)



[Go to Product page](#)

1 Image

Overview

Quantity:	100 µL
Target:	C2orf30 (ERLEC1)
Binding Specificity:	Middle Region
Reactivity:	Human
Host:	Rabbit
Clonality:	Polyclonal
Conjugate:	This C2orf30 antibody is un-conjugated
Application:	Western Blotting (WB)

Product Details

Immunogen:	C2 orf30 antibody was raised using the middle region of C2 rf30 corresponding to a region with amino acids GKHVHQYHEDKDSGKTSVVVGTWNQEEHIEWAKKNTARAYHLQDDGTQTV
Specificity:	C2 orf30 antibody was raised against the middle region of C2 rf30
Purification:	Affinity purified

Target Details

Target:	C2orf30 (ERLEC1)
Alternative Name:	C2orf30 (ERLEC1 Products)
Background:	C2orf30 is a probable lectin that binds selectively to improperly folded luminal proteins. May function in endoplasmic reticulum quality control and endoplasmic reticulum-associated degradation (ERAD) of both non-glycosylated proteins and glycoproteins.

Target Details

Molecular Weight:	55 kDa (MW of target protein)
Pathways:	SARS-CoV-2 Protein Interactome

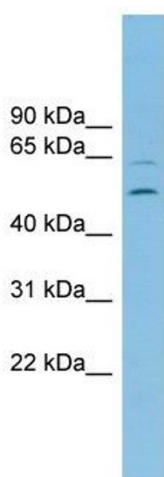
Application Details

Application Notes:	WB: 1 µg/mL Optimal conditions should be determined by the investigator.
Comment:	C2orf30 Blocking Peptide, catalog no. 33R-3363, is also available for use as a blocking control in assays to test for specificity of this C2orf30 antibody
Restrictions:	For Research Use only

Handling

Format:	Lyophilized
Reconstitution:	Lyophilized powder. Add distilled water for a 1 mg/mL concentration of C0 rf30 antibody in PBS
Concentration:	Lot specific
Buffer:	PBS
Handling Advice:	Avoid repeated freeze/thaw cycles. Dilute only prior to immediate use.
Storage:	4 °C/-20 °C
Storage Comment:	Store at 2-8 °C for short periods. For longer periods of storage, store at -20 °C.

Images



Western Blotting

Image 1. C2orf30 antibody used at 1 µg/ml to detect target protein.