

Datasheet for ABIN632591
anti-HS1BP3 antibody (N-Term)



[Go to Product page](#)

1 Image

Overview

| | |
|----------------------|---------------------------------------|
| Quantity: | 100 µL |
| Target: | HS1BP3 |
| Binding Specificity: | N-Term |
| Reactivity: | Human |
| Host: | Rabbit |
| Clonality: | Polyclonal |
| Conjugate: | This HS1BP3 antibody is un-conjugated |
| Application: | Western Blotting (WB) |

Product Details

| | |
|---------------|--|
| Immunogen: | HS1 BP3 antibody was raised using the N terminal of HS1 P3 corresponding to a region with amino acids YSEIEEFYQKLSSRYAAASLPPLPRKVLVFGESDIRERRAVFNEILRCVS |
| Specificity: | HS1 BP3 antibody was raised against the N terminal of HS1 P3 |
| Purification: | Affinity purified |

Target Details

| | |
|-------------------|---|
| Target: | HS1BP3 |
| Alternative Name: | HS1BP3 (HS1BP3 Products) |
| Background: | The protein encoded by this gene shares similarity with mouse Hs1bp3, an Hcls1/Hs1-interacting protein that may be involved in lymphocyte activation. |

Target Details

Molecular Weight: 43 kDa (MW of target protein)

Application Details

Application Notes: WB: 1 µg/mL
Optimal conditions should be determined by the investigator.

Comment: HS1BP3 Blocking Peptide, catalog no. 33R-10239, is also available for use as a blocking control in assays to test for specificity of this HS1BP3 antibody

Restrictions: For Research Use only

Handling

Format: Lyophilized

Reconstitution: Lyophilized powder. Add distilled water for a 1 mg/mL concentration of HS0 P3 antibody in PBS

Concentration: Lot specific

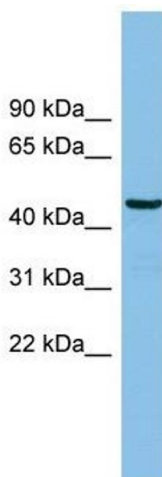
Buffer: PBS

Handling Advice: Avoid repeated freeze/thaw cycles.
Dilute only prior to immediate use.

Storage: 4 °C/-20 °C

Storage Comment: Store at 2-8 °C for short periods. For longer periods of storage, store at -20 °C.

Images



Western Blotting

Image 1. HS1BP3 antibody used at 1 ug/ml to detect target protein.