

Datasheet for ABIN632592

**anti-FAM160B2 antibody (N-Term)**[Go to Product page](#)**1** Image

## Overview

Quantity:	100 µL
Target:	FAM160B2
Binding Specificity:	N-Term
Reactivity:	Human
Host:	Rabbit
Clonality:	Polyclonal
Conjugate:	This FAM160B2 antibody is un-conjugated
Application:	Western Blotting (WB)

## Product Details

Immunogen:	RAI16 antibody was raised using the N terminal of RAI16 corresponding to a region with amino acids HYYIESTDESTPAKKTDIPWRLKQMLDILVYEEQQQAAAGEAGPCLEYLL
Specificity:	RAI16 antibody was raised against the N terminal of RAI16
Purification:	Affinity purified

## Target Details

Target:	FAM160B2
Alternative Name:	RAI16 ( <a href="#">FAM160B2 Products</a> )
Background:	The function of RAI16 protein is not widely studied, and is yet to be elucidated fully.
Molecular Weight:	82 kDa (MW of target protein)

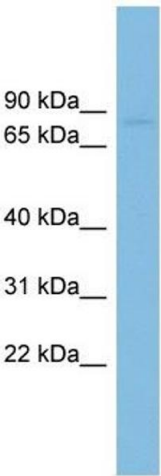
## Application Details

Application Notes:	WB: 1 µg/mL Optimal conditions should be determined by the investigator.
Comment:	RAI16 Blocking Peptide, catalog no. 33R-3883, is also available for use as a blocking control in assays to test for specificity of this RAI16 antibody
Restrictions:	For Research Use only

## Handling

Format:	Lyophilized
Reconstitution:	Lyophilized powder. Add distilled water for a 1 mg/mL concentration of RAI16 antibody in PBS
Concentration:	Lot specific
Buffer:	PBS
Handling Advice:	Avoid repeated freeze/thaw cycles. Dilute only prior to immediate use.
Storage:	4 °C/-20 °C
Storage Comment:	Store at 2-8 °C for short periods. For longer periods of storage, store at -20 °C.

## Images



**Western Blotting**

**Image 1.** RAI16 antibody used at 1 ug/ml to detect target protein.