

Datasheet for ABIN632617
anti-ZPBP2 antibody (Middle Region)



[Go to Product page](#)

1 Image

Overview

Quantity:	100 µL
Target:	ZPBP2
Binding Specificity:	Middle Region
Reactivity:	Human
Host:	Rabbit
Clonality:	Polyclonal
Conjugate:	This ZPBP2 antibody is un-conjugated
Application:	Western Blotting (WB)

Product Details

Immunogen:	ZPBP2 antibody was raised using the middle region of ZPBP2 corresponding to a region with amino acids VRLDSCRPGFGKNERLHSNCASCCVVCSPATFSPDVNVTCQTCVSVLTYG
Specificity:	ZPBP2 antibody was raised against the middle region of ZPBP2
Purification:	Affinity purified

Target Details

Target:	ZPBP2
Alternative Name:	ZPBP2 (ZPBP2 Products)
Background:	ZPBP2 may be implicated in gamete interaction during fertilization.
Molecular Weight:	35 kDa (MW of target protein)

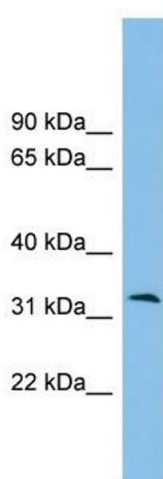
Application Details

Application Notes:	WB: 1 µg/mL Optimal conditions should be determined by the investigator.
Comment:	ZPBP2 Blocking Peptide, catalog no. 33R-9776, is also available for use as a blocking control in assays to test for specificity of this ZPBP2 antibody
Restrictions:	For Research Use only

Handling

Format:	Lyophilized
Reconstitution:	Lyophilized powder. Add distilled water for a 1 mg/mL concentration of ZPBP2 antibody in PBS
Concentration:	Lot specific
Buffer:	PBS
Handling Advice:	Avoid repeated freeze/thaw cycles. Dilute only prior to immediate use.
Storage:	4 °C/-20 °C
Storage Comment:	Store at 2-8 °C for short periods. For longer periods of storage, store at -20 °C.

Images



Western Blotting

Image 1. ZPBP2 antibody used at 1 ug/ml to detect target protein.