

Datasheet for ABIN632624
anti-PLA2G4E antibody (C-Term)



[Go to Product page](#)

1 Image

Overview

Quantity:	100 µL
Target:	PLA2G4E
Binding Specificity:	C-Term
Reactivity:	Human
Host:	Rabbit
Clonality:	Polyclonal
Conjugate:	This PLA2G4E antibody is un-conjugated
Application:	Western Blotting (WB)

Product Details

Immunogen:	PLA2 G2 antibody was raised using the C terminal of PLA2 2 corresponding to a region with amino acids TFFPLINDTRKYKAPGVERSPEELEQQQVDIYGPKTPYATKELTYTEAT
Specificity:	PLA2 G2 antibody was raised against the c terminal of PLA2 2
Purification:	Affinity purified

Target Details

Target:	PLA2G4E
Alternative Name:	PLA2G4E (PLA2G4E Products)
Background:	PLA2G4E is a calcium-dependent phospholipase A2 that selectively hydrolyzes glycerophospholipids in the sn-2 position.

Target Details

Molecular Weight:	96 kDa (MW of target protein)
Pathways:	Inositol Metabolic Process , VEGF Signaling

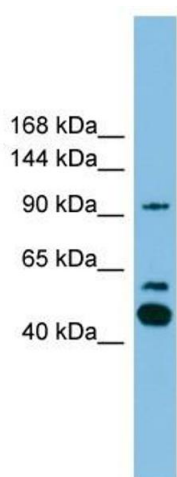
Application Details

Application Notes:	WB: 1 µg/mL Optimal conditions should be determined by the investigator.
Comment:	PLA2G4E Blocking Peptide, catalog no. 33R-9063, is also available for use as a blocking control in assays to test for specificity of this PLA2G4E antibody
Restrictions:	For Research Use only

Handling

Format:	Lyophilized
Reconstitution:	Lyophilized powder. Add distilled water for a 1 mg/mL concentration of PLA0 0 antibody in PBS
Concentration:	Lot specific
Buffer:	PBS
Handling Advice:	Avoid repeated freeze/thaw cycles. Dilute only prior to immediate use.
Storage:	4 °C/-20 °C
Storage Comment:	Store at 2-8 °C for short periods. For longer periods of storage, store at -20 °C.

Images



Western Blotting

Image 1. PLA2G4E antibody used at 1 ug/ml to detect target protein.