

Datasheet for ABIN632640
anti-SAPS1 antibody (N-Term)



[Go to Product page](#)

1 Image

Overview

| | |
|----------------------|--------------------------------------|
| Quantity: | 100 µL |
| Target: | SAPS1 |
| Binding Specificity: | N-Term |
| Reactivity: | Human |
| Host: | Rabbit |
| Clonality: | Polyclonal |
| Conjugate: | This SAPS1 antibody is un-conjugated |
| Application: | Western Blotting (WB) |

Product Details

| | |
|---------------|---|
| Immunogen: | PPP6 R1 antibody was raised using the N terminal of PPP6 1 corresponding to a region with amino acids MFWKFDLHTSSHLDTLEREDLSLPELLDEEDVLQECKVVNRKLLDFLLQ |
| Specificity: | PPP6 R1 antibody was raised against the N terminal of PPP6 1 |
| Purification: | Affinity purified |

Target Details

| | |
|-------------------|--|
| Target: | SAPS1 |
| Alternative Name: | PPP6R1 (SAPS1 Products) |
| Background: | Protein phosphatase regulatory subunits, such as SAPS1, modulate the activity of protein phosphatase catalytic subunits by restricting substrate specificity, recruiting substrates, and determining the intracellular localization of the holoenzyme. SAPS1 is a regulatory subunit for |

Target Details

the protein phosphatase-6 catalytic subunit.

Molecular Weight: 97 kDa (MW of target protein)

Application Details

Application Notes: WB: 1 µg/mL

Optimal conditions should be determined by the investigator.

Comment: PPP6R1 Blocking Peptide, catalog no. 33R-6008, is also available for use as a blocking control in assays to test for specificity of this PPP6R1 antibody

Restrictions: For Research Use only

Handling

Format: Lyophilized

Reconstitution: Lyophilized powder. Add distilled water for a 1 mg/mL concentration of PPP0 1 antibody in PBS

Concentration: Lot specific

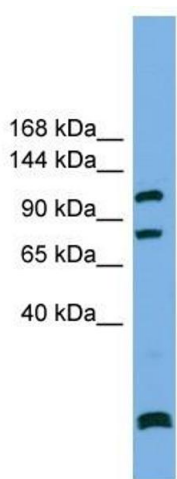
Buffer: PBS

Handling Advice: Avoid repeated freeze/thaw cycles.
Dilute only prior to immediate use.

Storage: 4 °C/-20 °C

Storage Comment: Store at 2-8 °C for short periods. For longer periods of storage, store at -20 °C.

Images



Western Blotting

Image 1. PPP6R1 antibody used at 1 ug/ml to detect target protein.