

Datasheet for ABIN632641  
**anti-PLSCR1 antibody (N-Term)**



[Go to Product page](#)

1 Image

## Overview

Quantity:	100 µL
Target:	PLSCR1
Binding Specificity:	N-Term
Reactivity:	Human
Host:	Rabbit
Clonality:	Polyclonal
Conjugate:	This PLSCR1 antibody is un-conjugated
Application:	Western Blotting (WB)

## Product Details

Immunogen:	PLSCR1 antibody was raised using the N terminal of PLSCR1 corresponding to a region with amino acids MDKQNSQMNASHPETNLPVGYPPQYPPTAFQGGPPGYSGYPGPQVSYPPPP
Specificity:	PLSCR1 antibody was raised against the N terminal of PLSCR1
Purification:	Affinity purified

## Target Details

Target:	PLSCR1
Alternative Name:	PLSCR1 ( <a href="#">PLSCR1 Products</a> )
Background:	PLSCR1 may mediate accelerated ATP-independent bidirectional transbilayer migration of phospholipids upon binding calcium ions that results in a loss of phospholipid asymmetry in the plasma membrane. PLSCR1 may play a central role in the initiation of fibrin clot formation, in

## Target Details

---

the activation of mast cells and in the recognition of apoptotic and injured cells by the reticuloendothelial system.

Molecular Weight: 35 kDa (MW of target protein)

Pathways: [Cellular Response to Molecule of Bacterial Origin](#)

## Application Details

---

Application Notes: WB: 1 µg/mL  
Optimal conditions should be determined by the investigator.

Comment: PLSCR1 Blocking Peptide, catalog no. 33R-5843, is also available for use as a blocking control in assays to test for specificity of this PLSCR1 antibody

Restrictions: For Research Use only

## Handling

---

Format: Lyophilized

Reconstitution: Lyophilized powder. Add distilled water for a 1 mg/mL concentration of PLSCR1 antibody in PBS

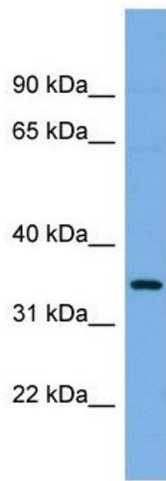
Concentration: Lot specific

Buffer: PBS

Handling Advice: Avoid repeated freeze/thaw cycles.  
Dilute only prior to immediate use.

Storage: 4 °C/-20 °C

Storage Comment: Store at 2-8 °C for short periods. For longer periods of storage, store at -20 °C.



### Western Blotting

**Image 1.** PLSCR1 antibody used at 1 ug/ml to detect target protein.